



# City of PALM COAST

## Stormwater & Engineering Department

160 Lake Avenue  
Palm Coast, FL 32164  
386-986-3710

### City of Palm Coast Floodplain Management Annual Progress Report January 2025

#### Executive Summary

The purpose of this document is to provide an annual account of activities associated with the City of Palm Coast (“City”) Floodplain Management Program. This document facilitates information that can benefit public officials, businesses, and the citizens of Palm Coast.

The Flagler County Local Mitigation Strategy (LMS) serves as the City’s Floodplain Management Plan under the Community Rating System (CRS) of the National Flood Insurance Program (NFIP).

Under CRS Activity 510, the City is required to complete a Floodplain Management Plan annual progress report. This document serves as that report. The report was submitted to the governing body via the acting City Manager, as she provided the final version to each City Council Member. The report will be available on the City’s website at the following link: <https://www.palmcoast.gov/emergency/flood-preparedness>.

#### Annual Progress Report Development and Staff Roles

This document was prepared by one (1) of the City Certified Floodplain Managers (CFM), Jordan Myers, and subsequently reviewed by the five (5) remaining City CFM staff, Patrick Buckley, Kendra Iannotti, Carmelo Morales, Sina Vedadi Moghadam, and Eric Gebo. A brief description of these CFM staff is provided in the following section(s). The referenced staff and the remaining Floodplain, Outreach, Awareness & Management (FOAM) Workgroup members, periodically conduct meetings to ensure that CRS program activities are managed and processed throughout the year. Additional discussion of the Team’s role and responsibilities are discussed in the following sections.

Ms. Jordan Myers, CFM is the primary reviewer of elevation certificates during the building permit stage of development. Her core responsibility revolves around the development process and reviews land use changes, development agreements, plats, and site development applications.

Mr. Patrick Buckley CBO, CFM is the Chief Building Official for Palm Coast and has worked in building code enforcement for twenty-eight years. He has been a CFM since 2007 spending most of his time as a floodplain administrator in two Colorado communities with riverine floodplains subject to flash-flooding events and regulating several existing critical facilities located in the floodplain.

Mrs. Kendra Iannotti, CFM actively participates in all CRS program activities and CFM meetings. Mrs. Iannotti’s primary responsibility is within the City Manager’s Office. She provides support for public information that includes website updates, brochures, and library resources.

Mr. Carmelo Morales, PE, CFM serves as the City’s Stormwater Engineer III and achieved CFM certification in August 2021. He has also held a professional license in civil engineering (water



resources and environmental) since 2012. He is responsible for CIP management, Stormwater designs, and Stormwater plan reviews.

Mr. Sina Vedadi Moghadam, EIT, CFM serves as the City's Stormwater Engineer I and achieved CFM certification in July 2024. He received his EIT certificate in April 2024 and has PhD in Civil Engineering which he received in May 2023. He is responsible for stormwater designs, MS4 permit, water quality monitoring, and various project management.

Mr. Eric Gebo, AIA, CFM serves as the City's Architect and achieved CFM certification in 2018. He also holds a professional license in architecture since 2011.

#### FOAM (Floodplain Outreach, Awareness & Management) Workgroup Mission Statement:

To support and educate our citizens about flood hazards and the National Flood Insurance Program, while ensuring a safe community through steadfast stewardship of floodplain management, hazard mitigation, open space protection, and comprehensive stormwater management.

The Team's priority is to ensure the City's esteemed reputation in the floodplain community is maintained while providing a safe environment for our citizens.

#### Members, Titles, and CRS Activity Focus:

- Patrick Buckley, CBO, CFM  
Chief Building Official; Role: Florida Building Code regulations
- Jordan Myers, CFM  
MS4 Permit & Floodplain Coordinator; Role: CRS Coordinator & City Floodplain Administrator (All Activities)
- Carmelo Morales, PE, CFM  
Stormwater Engineer III; Role: Activities 360, 450, 540
- Sina Vedadi Moghadam, EIT, CFM  
Stormwater Engineer I; Role: Activities 360, 450, 540
- Kendra Iannotti, CFM  
Executive Assistant to the City Manager; Role: Activities 330, 350, 360
- Cathy AlMBERG  
GIS Supervisor; Role: Activities 420, 440, 501

*To learn more, the following link will provide more detail. <https://crsresources.org/manual/>*

#### **Adoption of the LMS / Updates**

The Flagler County Local Mitigation Strategy (LMS) was adopted by *Resolution No. 2016-49* by the City Council on May 17, 2016. The LMS update was accepted on June 17, 2021, and is now approved for another five years. This report respects the effective LMS that gives Flagler County and its municipalities the opportunity to determine what all-hazards mitigation actions need to be taken to minimize damage before the next disaster strikes.

City staff continues to work with County staff and other LMS stakeholders quarterly to enhance floodplain management activities across the entire County.

As part of this annual report, the City of Palm Coast reviews the LMS project list. Concurrently, the 5- year Capital Improvement Plan (CIP) has been evaluated for qualifying projects; fiscal year



## **Flagler County Local Mitigation Strategy Working Group**

As noted in the LMS, “the Working Group acts as a local coordination committee to support and recommend projects for various grant programs; recommends to other regulating agencies or organizations ideas on how to better mitigate the community against natural disasters; and provides educational outreach to the general public about ways to prepare for disaster and mitigation opportunities for their homes and businesses.” The Group’s core consists of representatives of local municipalities, local organizations and County departments, and is coordinated by staff of the County Emergency Management Division. The LMS Working Group meetings are scheduled quarterly with supplemental topic-based meetings (i.e., floodplain managers, infrastructure, wildfire mitigation, etc.). The Working Group will continue to regularly review and revise its Prioritized Project List that are eligible for federal and state funding, i.e., Hazard Mitigation Grant Program (HMGP), Flood Mitigation Assistance (FMA) Program, Building Resilient Infrastructure and Communities (BRIC), Community Development Block Grant (CDBG), etc. Over the course of the last year, five meetings were conducted on 3/26/24, 4/12/24, 6/26/24, 9/17/24, and 12/17/24.

### **List of Mitigation Initiatives**

The LMS Working Group has established a list of mitigation projects. The list contains projects that are eligible for HMGP, FMA, and other federal and state funding. Many of the projects listed help to mitigate the potential of flood hazards.

See Attachment A to this report for the complete Prioritized Project List. Previous projects approved for funds from HGMP for Hurricane Matthew and Hurricane Irma are either completed or going through final close-out. There are other projects on the spreadsheet of mitigation projects, and when additional funding becomes available those projects will be ready to apply.

As referenced in the previous section, the list is a living document and routinely updated. Staff is currently working to incorporate other projects discussed in this report onto the list to reflect the City’s effort to mitigate risk. Additional consideration by the Working Group is anticipated due to the ranking process also being modified through the LMS rewrite and updated processing conducted at the state level.

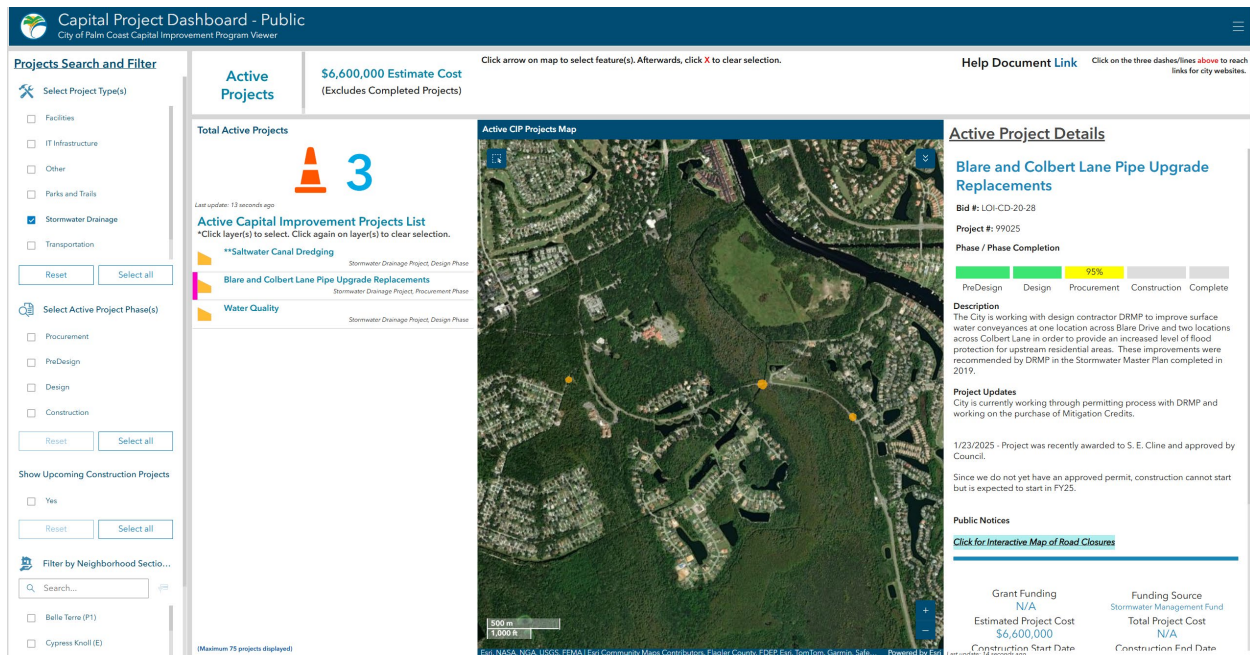
The City Stormwater Department continues to maintain and improve a structured maintenance program of the stormwater drainage network that reduces the chances of localized flooding hazards. With efforts from the GIS Department, and the Maintenance and Engineering teams from Stormwater, several tools have been developed which make tracking metrics easier and pinpointing areas of concern more efficient.

The following inventories maintenance activities conducted in-house by City staff in 2024:

- Swale maintenance and rehabilitation – 221,218 LF
- Valley gutters – 8 Total
- Culvert pipe replacement – 4,311 LF
- Culvert pipe cleaning – 155,764 LF
- Freshwater canal weed control – 10,821 Acres
- Drainage ditch maintenance – 2,787,090 LF
- Catch basins and control structures cleaned out – 623 Total

The Stormwater Engineering Team is continuously pursuing contracts from consultants and contractors to assist with Capital Improvement projects outside of the capabilities and equipment capacity of City Maintenance staff. These and other projects are incorporated into a Geographic Information System (GIS) Mapping Viewer to assist with project management and sharing updates with the public.

## CIP Project Dashboard – Collaboration project between Engineering and GIS Departments.



## Enhanced Stormwater Management Program

In October 2018, the city implemented a new enhanced stormwater program. This program was developed to enhance the level of Stormwater service we offer our residents and place emphasis on the maintenance of stormwater infrastructure to include Stormwater ponds, pipe crossings, ditches, canals, weir structures, inspection programs, and an accelerated Capital Improvement Program. This enhanced program focuses on a proactive approach to stormwater maintenance and improvements over a reactive approach. One of the more recent improvements to the enhanced program is a series of interactive Geographic Information system (GIS) applications that allows stormwater crews to document conditions of stormwater assets and keep track of work that was performed. Staff is continuously working with our GIS department to create new resources for internal and external use to improve logistics of stormwater operations and maintenance, and provide information on our past, present, and future activities to residents. Since moving to the new location at 22 Utility Drive in November 2019, the Stormwater Division has continued to grow. New personnel are regularly being hired on to expand crews and the fleet of specialized Stormwater equipment is already stretching the parking capacity of the facility.

Below is an outline of CIP projects that have been contracted out to external firms for design and construction during FY2024:



## Planning & Design

- Colbert and Blare – Final plans submitted on 3/19/24

## Construction

- London Waterway – Construction began on 11/21/2023.
- P-1 Weir Replacement – Project was awarded to S. E. Cline and pre-construction meeting held on 3/26/2024. Project has not yet started due to permitting delays related to recent 404 decision.
- Trenchless Pipe Lining projects completed in FY24:
  - 2 Fountain Gate Lane
  - 15 Cold Springs Court
  - 27 President Lane
  - 32 Welling Lane
  - 41 Westrobin Lane
  - 44 Filbert Lane
  - 64 Belleaire Drive
  - 70 Fairbank Lane
  - 80 Bud Hollow Drive
  - 142 Plainview Drive
  - 280 Beachway Drive
  - Belle Terre Pkwy @ Kathleen Trail
  - Belle Terre Pkwy @ US-1
  - PCP SW-Bridgehaven Drive
  - Rolling Sands Drive
  - Seminole Woods @ I-4



Figure 1: London Waterway construction



*Figure 2: London Waterway finished construction*

Through the Citywide Stormwater Master Plan, areas are identified that are susceptible to potential flooding. Project targets include infrastructure that requires improvements, enhancements, or additional maintenance. With this approach, the City develops a Capital Improvements Program that addresses areas of concern and identifies projects that will provide the greatest benefit to the citizens of Palm Coast. The Master Plan modeling has identified potential impacts from new development and aided the development community in providing the most efficient lowest impact stormwater management facilities. See Attachment B for the existing approved budget.

### **CRS Program Participation**

The Local Mitigation Strategy (LMS) references the importance and benefit of the City's participation in the Community Rating System (CRS) of the National Flood Insurance Program (NFIP). Under the CRS, the City undertakes flood protection measures beyond the minimum requirements of the NFIP. By doing so, the City achieved a "Class 4" certification, resulting in a 30% discount of flood insurance premiums issued within the Special Flood Hazard Area (SFHA) in the City effective on May 1, 2017. For properties outside SFHA, 10% discount will remain the same. No discounts are applicable to those holders of preferred risk policies that are already significantly discounted. Currently, according to FEMA, there are 3,216 policies in force in Palm Coast totaling \$1,654,115 in premiums. All these policies are eligible to take advantage of the discounts due to the City's CRS rating.

The City achieves CRS points by undertaking various activities that promote flood protection. These activities are conducted by Floodplain Managers and various City departments. The following section is a summary of certain ongoing activities:



<b>Activity</b>	<b>Departments</b>	<b>CRS Activity #</b>
Collect, review, and maintain elevation certificates. Provide copies to the public.	Floodplain Managers/ Planning/ Zoning/ Stormwater and Engineering	310
Provide Flood Insurance Rate Map (FIRM) information. Provide Flood Zone Determination Letters to the public. Review, maintain and update FEMA Letters of Map Amendments or Revisions. Provide flood insurance information.	Floodplain Managers	320
Provide outreach to the community. Provide flood protection information.	Floodplain Managers	330
Provide flood protection information at the library and on City website	Floodplain Managers/ Information Technology/ Flagler County Public Library	350
Provide technical advice and assistance to public with flooding conditions. Annually publicize the service.	Floodplain Managers/ Stormwater and Engineering	360
Encourage residents and businesses to purchase flood insurance coverage	Floodplain Managers	370
Preserve floodplain in open space and public acquisition.	Planning	420
Maintaining higher regulatory standards. Provide low density areas for floodplain properties. Review new development for compliance. Enforcement of regulations.	Floodplain Managers/ Planning/ Stormwater and Engineering/ Building Division/ Code Enforcement	430
Maintain and use digitized maps. Day to day management of the floodplain. Maintenance of elevation reference marks.	Floodplain Managers/ Information Technology/ Stormwater and Engineering	440
Stormwater management, soil and erosion control, and water quality. Review building elevation to meet floodplain regulations.	Stormwater and Engineering/ Building Division/Planning/ Floodplain Managers	450
Maintain repetitive loss records. Provide yearly notice of property protection.	Floodplain Managers	502
Implement and update Floodplain Management Plan.	Flagler County/ Planning/ Capital Improvements/ Floodplain Managers	510
Drainage system maintenance. Enforce and publicize stream dumping regulations.	Floodplain Managers/ Stormwater and Engineering	540
Emergency response program.	Stormwater and Engineering/ Fire Department /Flagler County EMS	610

These activities are now reviewed through a new centralized collection process for annual recertification purposes for all CRS communities. The City of Palm Coast completed the Community Assistance Visit (CAV) and the 2024 recertification. The City maintained its Class 4 designation and received a 100% on the review of elevation certificates.

Being a Class 4 designation, the City of Palm Coast must participate in this comprehensive review of all activities conducted through the community's floodplain management program; the process ensures that activities remain consistent with the CRS standard of a Class 4. Currently, there are



only 23 other communities with a Class 3 designation or better across the United States which results in discounts for customers holding flood insurance policies. Within the State of Florida, Pinellas County, Class 2, Town of Cutler Bay, Miami-Dade County, Monroe County, and the City of Ocala, Class 3 are the only communities that rank higher than the City of Palm Coast. See Attachment C for participating communities in Florida and FEMA Fact Sheet (Attachment D).

## Certified Floodplain Manager Program

The Association of State Floodplain Managers (ASFPM) has established a national program for professional certification of floodplain managers. The program recognizes continuing education and professional development that enhances the knowledge and performance of local, state, federal, and private-sector floodplain managers. As referenced, one staff member in the City's Building Division, one in the City Manager's Office, and four in the Stormwater & Engineering Department have achieved the status of Certified Floodplain Manager (CFM). These certifications reflect the City's commitment to professional development in implementing the City's Floodplain Management Plan. All CFM certified staff are in good standings with the required continuing education requirements.

## Training

The City CFM staff have participated in many virtual training sessions to maintain the required Continuing Education Units (CEU) and beyond. Numerous other training activities were conducted amongst the remaining Certified Floodplain Managers to maintain their certifications.

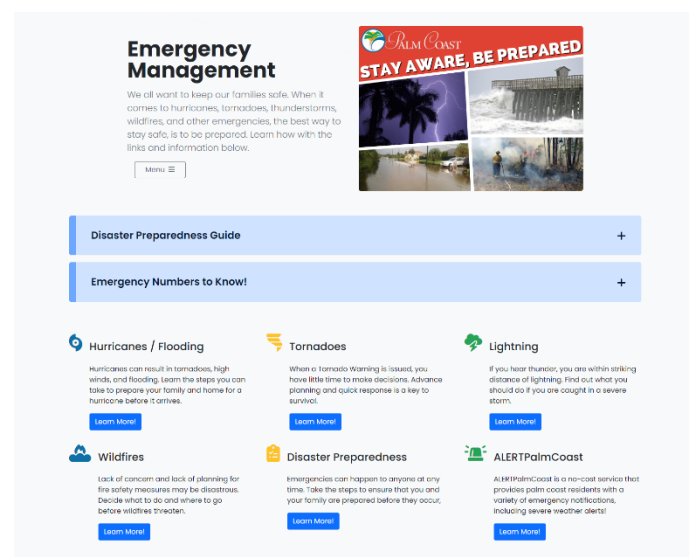
## Outreach

City staff targets opportunities to initiate and partner with external agencies to educate the public regarding floodplain management and associated effects on insurance policies and safety matters. Each Spring, an informational brochure is released to the public via a utility bill insert. In addition, staff participates in various events to promote flood awareness, and the [City's website](#) serves as a resource for tips and other helpful information.

- Annual Utility Bill Insert (May 2024)
- Annual Mailing to Insurance and Real Estate Brokers for flood insurance awareness (August 2024)
- Annual Mailing to owners of new single-family homes constructed in a Special Flood Hazard Area (August 2024)
- Flagler County Home Show (January 2024)

## Flood Insurance Rate Maps and Flood Insurance Study

On June 6, 2018, the updated Flood Insurance Rate Maps and Study took effect. As the new maps were adopted 6 years ago, the amount of determination requests has decreased significantly. During this reporting cycle, CFMs responded to 4 routine requests for a flood zone determination and 10 determinations during the Home Show.



## Summary

The Flagler County Local Mitigation Strategy (LMS), which serves as the City's Floodplain Management Plan under the Community Rating System (CRS) of the National Flood Insurance Program (NFIP), was formally adopted by the City of Palm Coast City Council on May 17, 2016, and updated on June 17, 2021. As part of the LMS, the City accounts for Mitigation Initiative Projects and associated status. A strong element to these efforts is the maintenance and improvement of the overall performance of the master stormwater system. Many other improvements are being planned and under design for construction in future years as part of the Stormwater Master Plan. Lastly, the City has been very successful in securing grants to offset the cost of mitigating risk while ensuring continuum of services of water and wastewater utilities City-wide.

As part of the CRS requirements, the City of Palm Coast participates in annual recertification and a comprehensive assessment every three years called a Community Assistance Visit (CAV) conducted by Insurance Services Office (ISO). Activities are undertaken by various City departments on an ongoing basis to retain the CRS certification, which results in substantial discounts to flood insurance premiums in the City of Palm Coast. The City of Palm Coast completed the Community Assistance Visit (CAV) and the 2024 recertification. The City maintained its Class 4 designation and received a 100% on the review of elevation certificates

For insurance holders located within a special flood hazard area (A and AE zones), a 30% reduction is applied at renewal. For properties outside the Special Flood Hazard Area, 10% discount remains the same.

City staff have steadily improved educational outreach activities. City staff recognizes that these activities are critical to expand awareness regarding the importance of infrastructure maintenance, flood insurance, emergency preparedness and City services. The [City website content](#), publications, utility bill inserts, and annual mailing elements have been enhanced to include information on the Flood Insurance Rate Map changes that took effect on June 6, 2018 and the City's Enhanced Stormwater Management Program.

Attachment A

Jurisdiction	POC	State Project #	Rank	Score	Project Name	Agency Representative	Project Description	Hazard Mitigated	Funding Source(s)	Estimated Project Cost	New or Existing Buildings/Infrastructure	Goal/Objective	Final Project Cost	Federal Share Cost	Subrecipient Management Cost	Non-Federal Share Cost	Status	Estimated Completion Date	Last Updated	Notes			
BNL-15	Bunnell	Mary Anne Newcott: mnewcott@bunnellcity.us		Jan 07	62	Bunnell Permanent Generator	Bunnell Infrastructure	Purchase and installation of a 150kw backup generator with 500 amp ATS and docking station. When the new administrative/PO building is constructed, this will ensure the City of Bunnell's Police Department and essential staff are able to conduct operations in the event of a power outage.	Wind, Flooding	DR - 4673 Jan	\$300,000.00	New Building	Goal 1 Obj. 1.1, 1.2					In Progress		8/30/2024	1/23/2024: DR-4673 Submitted awaiting RFI 8/30/2024: Still waiting to hear back about application.		
FLB-10	Flagler Beach	Katherine Monroy: kMonroy@cityofflaglerbeach.com	4486-0016		89	South Flagler Avenue Stormwater Flooding Mitigation	Flagler Beach Engineering	Mitigate consistent flooding threats to the COFB Police Department and the COFB Fire Department and Emergency Services.	Flooding	HMPG DR-4486 Matching funds will be provided by COFB.	\$725,000.00	Existing Infrastructure	Obj. 1.1, 1.2, 6.2		\$94,500.00	\$5,250.00	\$61,940.00	In Progress		8/30/2024	Phase 1 completed. FEMA/BCA review in progress. Awaiting funding for phase 2, and awaiting other related funding opportunities.		
FLB-09	Flagler Beach	Katherine Monroy: kMonroy@cityofflaglerbeach.com	4468-0034		64	Wideline Hardening	FB Engineering	Widening and stormwater treatment for the existing three building complex. A roof replacement for the	Wind	Submitted under DR-4468	\$417,200	Existing Infrastructure	Goal 1 Obj. 1.7		\$312,900.00		\$104,300.00	Awaiting Closedout		8/30/2024	99% complete. Final inspection completed. Awaiting request for reimbursement paperwork to be submitted.		
FLB-08	Flagler Beach	Katherine Monroy: kMonroy@cityofflaglerbeach.com	4564-0037		62	Lambert Avenue Swales	Flagler Beach Public Works	Construct retention swales and add culverts along the remaining 5,400 linear feet at the west end and east end of Lambert Avenue.	Flooding			Existing Infrastructure	Obj. 1.5, 1.6				\$896,040.00	In Progress		8/30/2024	Inactive project, seeking funding opportunities.		
FLG-31	Flagler County	Huly Abbaness: habaness@flaglercounty.gov		Jan 05	Fully Funded (70)	Nexus Center Code+	Flagler County Library BCCC	New county facility that will serve as both public library and a social service program site (to include low-income congregate housing), is currently being designed and planned for construction in the near future with a required building code wind rating of 140 mph. The County desires to design and build this facility to be Category 5 Hurricane wind resistant and also maintain electrical services (City generated) during disasters such as tropical cyclones, tornadoes, and severe storms, to allow the structure to stay intact and continue to provide public services, such as the critical flood program and to allow personnel to remain in the facility during the impacts of these events.	Wind and Technological	DR - 4673 Jan	\$804,933.00	New Infrastructure	Goal 1, Goal 6 Obj. 1.1, 1.2, 1.5, 1.7, 6.4				In Progress		9/5/2024	DR-4673 Submitted Funded via 2023 SBMA Funds			
FLG-25	Flagler County	Jonathan Lord: jlord@flaglercounty.gov	4486-0014		Fully Funded (62)	EOC Roof Improvements	Flagler County Emergency Management	Install new (mitigate existing) EOC Roof	Wind	HMPG DR-4486 Covid-19	\$671,660.00	Existing Infrastructure	Obj. 1.2, 1.7		\$808,533.90	\$16,026.25	\$89,837.10	In Progress	12/31/2025	1/23/2024	Awarded under DR-4486 Kick-off Meeting 2024-11 Work expected to begin 2/26/25		
FLG-37	Flagler County	Ashley Wren-Kay: awren-kay@flaglercounty.gov Harriet Tabassian: HTabassian@flaglercounty.gov Amy Steiger: asteiger@flaglercounty.gov			Fully Funded (35)	Flagler County Shore Protection Project	Flagler County Engineering Department	The primary protection problem in Flagler County is BR A1A and oceanfront development during storm events. In FCEP's latest (June 2008) report entitled "Critically Endangered Beaches in Flagler" The FCEP identified six (6) critically eroded areas totaling 5.7 miles. BR A1A is periodically compromised during storm events and has forced traffic to be rerouted.	Flooding, Erosion	HMPG, CDBG, Ad Valorem Tax, USACE	\$1,000,000.00	New and Existing Infrastructure	Goal 2 Obj. 2.4 and 2.5				In Progress		9/6/2024	The project has been funded. Half of it has been completed and the other half should be completed next year.			
FLG-30	Flagler County	Harriet Tabassian: HTabassian@flaglercounty.gov Ashley Wren-Kay: awren-kay@flaglercounty.gov		Jan 03	76	Environmentally Sensitive Lands Acquisition	Flagler County Land Management	Acquisition of the property conserves/preserves oceanfront property in a natural state to enhance erosion control with natural features including hard coquina shoreline (resilient beachbottom), native dune and coastal strand vegetation.	Wind & Wildfire	DR - 4673 Jan (727) CDBG Funds	\$49,380,615.59	Existing Infrastructure	Goal 2 Obj. 1.2, 1.3, 1.4, 1.6, 8.1, 8.2, 8.3		\$37,035,460.19			Funding Needed		1/14/2024	DR-4673 Submitted 11/9/2023		
FLG-33	Flagler County	Richard Zion: RZion@flaglercounty.gov Harriet Tabassian: HTabassian@flaglercounty.gov		Italia-02	76	Malcomps Canal Residence / Revetment	Flagler County Engineering	It is proposed to correct and stabilize the front slope of the canal by installing a standard revetment structure the length of the canal. This will make the stormwater feature more resilient structurally and protect against erosion. It is also proposed that the canal be widened slightly to increase the flood storage capacity to help reduce the flood potential of the canal surrounding residential and commercial properties. Additionally, water quality improvements features are proposed by installing nitrate treatment settling ponds using natural coquina stone. The settling ponds would improve the stormwater quality prior to outfall into the ICWW (Phinda Outfalling Water) and the use of the coquina materials will also aid to restore and preserve historical aesthetics/construction of the original canal.	Flooding		\$8,759,146.00	New and Existing Infrastructure	Obj. 1.5, 2.1, 2.4, 2.5, 6.2				Funding Needed		5/22/2024	Submitted under HMPG Italia on 6/7/2023			
FLG-11	Flagler County	Mike Dickson: mdickson@flaglercounty.gov			70	Hidden Trails Community Center Generator	Flagler County General Services	Add a 125kw generator to the Hidden Trails Community Center	Power Failure	HMPG, PDM, Capital Funds	\$63,000.00	Existing Infrastructure	Obj. 1.2, 3.1					Awaiting Closedout			Ready for closing, waiting for reimbursement.		
FLG-12	Flagler County	Michael Orlando: mofarndo@flaglercounty.gov			69	County Hazardous Vegetation Wildlife Mitigation	Flagler County Land Management	Create defensible space, reduce fuel loads throughout county property	Wildfire	DR-4283	\$50,000.00	Existing Infrastructure	Goal 2					In Progress		8/30/2024	Ready for closing, waiting for reimbursement 8/30/2024 - still in progress waiting for funding		
FLD-28	Flagler County	Michael Orlando: mofarndo@flaglercounty.gov			68	Willow Woods Potable Water Project	Flagler County Land Management	The project proposes to connect the community with existing drinking water infrastructure from A1A. Also, the project places dry sewer lines to provide residents with the option to tie-in to sewer and eliminate their onsite septic systems. Once complete, the project will connect the Willow Woods community to the existing waterline and sewer line.	Flooding, Wind, Extreme Heat	CDBG-MIT General Infrastructure Program	\$1,568,250.20	Existing Infrastructure	Obj. 1.2, 6.2					Funding Needed					
FLG-27	Flagler County	Michael Orlando: mofarndo@flaglercounty.gov			66	Water Oak Canal Restoration	Flagler County Land Management	Ensure the drainage system which drains the 30 square mile area does not block and flood homes. The drainage area is primarily low and moderate income homes. If the drainage continues to be blocked, the water poses a threat to the homes within the area. Opening the canal the water runoff should drain more quickly and be less likely to impact the homes.	Flooding	N/A, not needed	\$517,368.00	Existing Infrastructure	Obj. 1.2					Funding Needed		8/30/2024			
FLG-20	Flagler County	Michael Orlando: mofarndo@flaglercounty.gov		Nicole D4	61	E-Section Defensible Space	Flagler County Land Management	Remove all pine trees, palm, and hardwood trees in the same described area. Install a 15 inch 3-pipes tractor/harrow vehicle-disked linear line in the same described area. Install fencing along property line to permanently memorialize property line to allow for hazard mitigation (mitigate potential vehicle-overlook/overrun).	Wind & Wildfire	DR - 4673 Jan	\$160,000.00	Existing Infrastructure	Obj. 1, 2.1, 4, 2.1, 6.1, 6.2					Funding Needed		8/30/2024	Request for qualifications conducted and firm selected. Also submitted under CDBG-MIT general planning grant. Awaiting for funding HMPG.		
FLG-21	Flagler County	Mike Dickson: mdickson@flaglercounty.gov			58	Harden Harwood Community Center	Flagler County General Services	Install impact windows and doors, gable and bracing and roof straps at the community center. Install a generator for decentralized power.	Wind, Power Failure	HMPG, general fund	\$75,000.00	Existing Infrastructure	Obj. 1.6, 1.7					Funding Needed					
FLG-32	Flagler County	Perry Bayles: PBayles@flaglercounty.gov Richard Zion: RZion@flaglercounty.gov Harriet Tabassian: HTabassian@flaglercounty.gov				Fire Station 71 Flood Mitigation	Flagler County Fire Rescue	Occasionally interior office, common areas, and crew quarters flood during heavier precipitation events. The frequent flooding is disruptive to the facility and emergency response operations and has led to repeated costly repairs of the interior to keep it habitable and functional. The existing facility has no dedicated stormwater management facility and considering the onsite and surrounding areas low lying drainage conditions, the frequent flooding is expected to continue. REQUEST CONSIDERATION OF APPLYING FOR FUNDING FOR THE RELOCATION OF FIRE RESCUE STATION 71 TO ANOTHER COUNTY PROPERTY.	Flooding		\$8,000,000.00	New and Existing Infrastructure	Goal 1 Obj. 1.1, 4.3, 6.2				Funding Needed		6/27/2023				
MJD-23	Multi-Jurisdictional	Kory Bush: kbush@flaglerschools.com			70	Stormwater Analysis along SR 100 near Airport & FPC	Flagler School Board / Plant Services	In recent years, the school board site has been completely surrounded by a 1,557 acre mixed use DRI called Town Center at Palm Coast. Development of the project resulted in the school board site existing well below the surrounding elevations. The result has been recurrent flooding to the point of intrusion into school buildings. The study should provide a solution.	Flooding	HMPG, School Board Tax, CDBG	\$30,000.00	New and Existing Infrastructure	Goal 1 Obj. 1.2					Funding Needed					
PC-08	Palm Coast	Garram Hopkins: ghopkins@palmcoast.gov		Jan 01	77	PEP Panel Infrastructure Replacement	Palm Coast Utility Department	Replacement of 1st and 2nd generation style PEP (pretreatment effluent pumping) system control panel located in low-pressure PEP sections throughout the City of Palm Coast. Replace with updated model CP100-PCGS in NEMA type 1 15VAC Max 1" Phase / Rating 600HZ, including locatable HBL311BSW, DOA 125V Type 4, 4X, 12 LB, listed Generator Reclosable Withstanded ATS preventing Phase to Phase during loss of utility power. Installation of panels will allow for temporary installation of generators to assist in operation of PEP system removing wastewater from residents when extensive power outages occur.	All Hazards	DR - 4673 Jan	\$2,400,000.00	Existing Infrastructure	Goal 1				In Progress	Unknown	9/13/2024	Applied for FEMA HMPG funding under Hurricane Ian designation. Currently in RFI/Review Process with FL DEM.			
PC-24	Palm Coast	Garram Hopkins: ghopkins@palmcoast.gov	4673-0047	Jan 02	77	Back-up Emergency Pumps for Pump Stations	Palm Coast Wastewater	Provide a stationary backup by-pass pump at 5 pump station locations. Providing auxiliary pumping will allow the stations to operate normally during loss of utility power during emergency events. By operating normally the wastewater collection system will be much less likely to experience sanitary sewer overflows (SSOs). Reduction of SSOs will protect both human and environmental health by keeping untreated raw sewage from entering roadside swales and stormwater collection ditches and canals.	Power Failure	DR - 4673 Jan	\$460,320.00	Existing Infrastructure	1.6, 1.7		\$345,240.00	\$23,016.00	\$138,096.00	In Progress		9/13/2024	Applied for FEMA HMPG funding under Hurricane Ian designation. Contract has been received but not formally executed.		
PC-27	Palm Coast	Garram Hopkins: ghopkins@palmcoast.gov		Nicole D1	77	City of Palm Coast PEP Panel Replacement #2	Palm Coast Utility Department	Replacement of 1st and 2nd generation style PEP (pretreatment effluent pumping) system control panel located in low-pressure PEP sections throughout the City of Palm Coast. Control panels are up to 30 years old. Replace with updated model CP100-PCGS in NEMA type 1 15VAC Max 1" Phase / Rating 600HZ, including locatable HBL311BSW, DOA 125V Type 4, 4X, 12 LB, listed Generator Reclosable Withstanded ATS preventing Phase to Phase during loss of utility power. Installation of panels will allow for temporary installation of generators to assist in operation of PEP system removing wastewater from residents when extensive power loss has occurred. Estimated total # of Control Panels to replace is 11,800. Estimated total # of Control Panels to replace for this project is 500 panels at a cost of \$800 each for a total project cost of \$400,000.00.	All Hazards	DR-4680 Nicole	\$400,000.00	Existing Infrastructure	Goal 1				In Progress		9/13/2024	Applied for FEMA HMPG funding under Hurricane Nicole designation. Currently in RFI/Review Process with FL DEM.			
PC-30	Palm Coast	Garram Hopkins: ghopkins@palmcoast.gov		Italia-01	77	PC Manhole Lids for I&I Reduction	Palm Coast Utility Department	Reduce Inflow & Infiltration into manholes with sealed lids system	Flooding		\$525,991.00	Existing Infrastructure	1.2, 1.5, 1.7, 6.2, 6.3					Funding Needed		9/13/2024	Applied for FEMA HMPG funding under Hurricane Ian designation. Just received first RFI's request this week. Currently in review Process with FL DEM.		
PC-21	Palm Coast	Garram Hopkins: ghopkins@palmcoast.gov		Jan 04	76	Wellfield Generators	Palm Coast Utility Department	Replace aging redundant power systems with new generators at 13 locations	Power Failure	DR - 4673 Jan	\$356,000.00	Existing Infrastructure	1.6					In Progress	Unknown	9/13/2024	Applied for FEMA HMPG funding under Hurricane Ian designation. Currently in RFI/Review Process with FL DEM.		
PC-26	Palm Coast	Garram Hopkins: ghopkins@palmcoast.gov		Nicole D2	73	Palm Coast Wellfield Generators #2	Palm Coast Utility Department	Several of our wells have a backup generator to supply power to operate during power outages. The majority of the generators for Water Treatment Plant #1 use a right angle drive (RAD). This is simply an auxiliary drive or sometimes referred to as a power take-off (PTO) that allows the pump to be operated by a diesel engine. Over the years the Utility has been equipping the well pumps with a stand-alone generator not depending on the PTO application, as it is a manual process. The well majority are over 30 years old some going on close to 40 and are no longer very reliable, they are expensive to repair and maintain. The City is currently seeking quotes on replacing the RAD's with a stand-alone generator. This project will be for 4 replacements at four wellfields.	Loss of Power	HMPG	\$356,000.00	Existing Infrastructure	1.6				In Progress		9/13/2024	Applied for FEMA HMPG funding under Hurricane Nicole designation. Currently in RFI/Review Process with FL DEM.			
PC-23	Palm Coast	Andrea Mudryk: amudryk@palmcoastgov.com Eric Gaben: egaben@palmcoastgov.com			72	Palm Coast Maintenance Operations Complex Expansion/Hardening	Palm Coast Stormwater & Engineering	New buildings will be added and serve as hurricane shelters for essential staff	Wind		\$20,000,000.00	New and Existing Infrastructure	1.7					Awaiting State			99% complete, working with DEM for reimbursement.		
PC-29	Palm Coast	Carmelo Morales: CMorales@palmcoastgov.com Andrea Mudryk: amudryk@palmcoastgov.com		Italia-03	71	PC K-Section Drainage Improvements	Palm Coast Stormwater & Engineering	Replace stormwater pipe system with culverts to increase stormwater conveyance	Flooding		\$5,775,000.00	Existing Infrastructure	1.5, 6.2					Funding Needed		8/30/2024	5/22/2024: Applying for HMPG Italia		
PC-16	Palm Coast	Carmelo Morales: CMorales@palmcoastgov.com Andrea Mudryk: amudryk@palmcoastgov.com		Jan 06 Nicole D3	70	Palm Coast Stormwater Conveyance Improvements	Palm Coast Stormwater	Replace existing four (4) 72" cross-drain pipes under Colbert Lane downstream of FTT structure with four (4) 7-foot tall by 12-foot wide concrete box culverts (CBVs)	Flooding	DR - 4673 Jan	\$4,197,675.00	Existing Infrastructure	1.5					Funding Needed		8/30/2024	11/3/2023: DR-4673 Submitted		
PC-28	Palm Coast	Carmelo Morales: CMorales@palmcoastgov.com Andrea Mudryk: amudryk@palmcoastgov.com		Italia-04	69	PC Weir Replacement (W-1)	Palm Coast Stormwater & Engineering	Replacement of weir to manage upstream water elevation	Flooding		\$1,575,000.00	Existing Infrastructure	1.5, 3.4					Funding Needed		8/30/2024	5/22/2024: Applying for HMPG Italia		
PC-20	Palm Coast	Carmelo Morales: CMorales@palmcoastgov.com Andrea Mudryk: amudryk@palmcoastgov.com			56	London Stormwater Storage Area	Palm Coast Stormwater & Engineering	Construct storage to add to stormwater capacity while incorporating a passive park amenity	Flooding	SJRWMD REDD, HMPG, BRIC, CDBG-DR, Ad Valorem taxes, FMA	\$3,690,000.00	New Infrastructure	1.6					In Progress		8/30/2024	Under Construction. ARPA and SJRWMD Grant funding.		

## City of Palm Coast Next Year Budget Analysis

-43%  
(7,036,323)

-16%  
(2,662,419)

		2022 Actuals	2023 Original Budget	2023 Revised Budget	2023 Actuals	2023 Projected Actuals	2024 DEPT RQUEST Budget
54205509	STORMWATER ENGINEERING	\$186,957.76	\$16,192,946.00	\$16,192,946.00	\$5,289,312.42	\$9,156,623.00	\$13,530,527.00
012000	SALARIES AND WAGES	\$604,486.11	\$923,220.00	\$923,220.00	\$430,018.22	\$848,220.00	\$516,402.00
012010	CAR/CELL ALLOWANCE	\$4,561.95	\$0.00	\$0.00	\$621.55	\$622.00	\$0.00
014000	OVERTIME	\$7,264.50	\$10,000.00	\$10,000.00	\$2,324.71	\$5,000.00	\$1,000.00
021000	FICA TAXES	\$36,623.62	\$57,198.00	\$57,198.00	\$25,994.44	\$57,198.00	\$31,670.00
021100	MEDICARE	\$8,623.68	\$13,385.00	\$13,385.00	\$6,079.36	\$13,385.00	\$7,410.00
022000	RETIREMENT CONTRIBUTIONS	\$74,936.59	\$108,697.00	\$108,697.00	\$54,524.76	\$103,697.00	\$61,291.00
023000	HEALTH INSURANCE	\$79,906.78	\$110,524.00	\$110,524.00	\$58,353.80	\$105,524.00	\$81,960.00
023030	LIFE INSURANCE	\$958.67	\$4,125.00	\$4,125.00	\$677.19	\$4,125.00	\$2,306.00
023035	DISABILITY	\$1,978.89	\$4,081.00	\$4,081.00	\$1,347.13	\$4,081.00	\$2,282.00
024000	WORKERS COMPENSATION	\$8,042.70	\$14,711.00	\$14,711.00	\$13,327.82	\$14,711.00	\$8,487.00
	PERSONAL SERVICES	\$827,383.49	\$1,245,941.00	\$1,245,941.00	\$593,268.98	\$1,156,563.00	\$712,808.00
031000	PROFESSIONAL SERVICES	\$139,721.87	\$175,000.00	\$175,000.00	\$56,377.43	\$96,847.00	\$450,000.00
	Details for PROFESSIONAL SERVICES						
	Miscellaneous Services					\$26,214.00	\$50,000.00
	City-Wide Infrastructure Stormwater Master Plan					\$69,472.00	\$0.00
	City-Wide Real Time Flood Forecasting					\$0.00	\$275,000.00
	MS4 Permitting Program					\$1,161.00	\$125,000.00
034000	OTHER CONTRACTUAL SVCS	\$3,271.23	\$20,000.00	\$20,000.00	\$50.00	\$10,000.00	\$20,000.00
	Details for OTHER CONTRACTUAL SVCS						
	Miscellaneous Services					\$10,000.00	\$20,000.00
040000	TRAVEL & EXTERNAL TRAINING	\$3,752.70	\$9,800.00	\$9,800.00	\$2,133.73	\$9,800.00	\$11,300.00
	Details for TRAVEL & EXTERNAL TRAINING						
	American Society of Floodplain Managers (ASFM) FFMA Conference					\$5,000.00	\$5,000.00
	Geographic Information System Training					\$2,300.00	\$2,300.00
	Project Management Institute Training					\$0.00	\$1,500.00
	Florida Stormwater Association (FSA) Conference					\$1,500.00	\$1,500.00
	Additional Training and Items to Maintain/Renew Licenses & Certifications					\$1,000.00	\$1,000.00
052000	OPERATING SUPP&EQUIPUNDER\$5K	\$3,596.22	\$8,103.00	\$8,103.00	\$6,171.72	\$8,103.00	\$2,288.00
	Details for OPERATING SUPP&EQUIPUNDER\$5K						
	Boot Stipends					\$1,200.00	\$600.00
	Truck & Hand Tools, Misc. Supplies					\$2,500.00	\$1,000.00
	Calibration & Replacement of Minor/Small Survey Equipment					\$3,000.00	\$0.00
	Copy Paper					\$53.00	\$88.00
	Uniform Shirts					\$1,350.00	\$600.00



# City of Palm Coast Next Year Budget Analysis

						-43%	-16%
052005	FUEL CHARGE	\$2,352.67	\$3,500.00	\$3,500.00	\$1,093.87	\$3,500.00	\$1,250.00
054000	BOOKS, PUB, SUBSCRIP, MEMBERSHIP	\$829.90	\$4,548.00	\$4,548.00	\$353.75	\$4,548.00	\$2,589.00
	Details for BOOKS, PUB, SUBSCRIP, MEMBERSHIP						
	Association of State Floodplain Managers (ASFPM) Membership					\$600.00	\$600.00
	Additional Memberships, Licenses & Certifications					\$1,000.00	\$500.00
	Florida Engineering Society (FES) Membership					\$600.00	\$500.00
	Florida Floodplain Managers Association (FEMEA) Membership					\$600.00	\$600.00
	Florida Board of Professional Engineers (FBPE) License/Certification					\$1,000.00	\$0.00
	Books, Publishings & Educational					\$250.00	\$250.00
	Project Management Institute (PMI) Membership					\$139.00	\$139.00
	National Society of Professional Surveyors (NSPS) License/Certification					\$80.00	\$0.00
	Florida Surveying & Mapping Society (FSMS) Membership					\$279.00	\$0.00
	<b>OPERATING EXPENDITURE</b>	<b>\$153,524.59</b>	<b>\$220,951.00</b>	<b>\$220,951.00</b>	<b>\$66,180.50</b>	<b>\$132,798.00</b>	<b>\$487,427.00</b>
061000	LAND	\$2,062.98	\$0.00	\$0.00	\$4,867.60	\$5,000.00	\$75,000.00
061000-99026	LAND	\$0.00	\$75,000.00	\$75,000.00	\$0.00	\$0.00	\$0.00
063000-55001	IMPR-CONTROL STRUCTURE REPL	\$36,861.20	\$75,000.00	\$75,000.00	\$0.00	\$75,000.00	\$150,000.00
	Details for IMPROVEMENTS OTHTHAN BUILDINGS						
	STRUCTURE REPAIRS & SCADA UPGRADES					\$75,000.00	\$150,000.00
063000-55003	DITCH & PIPE REHAB & RENEWAL	\$0.00	\$90,000.00	\$90,000.00	\$66,450.50	\$90,000.00	\$50,000.00
	Details for IMPROVEMENTS OTHTHAN BUILDINGS						
	Construction					\$90,000.00	\$50,000.00
063000-55010	PINE GROVE WTRWAY DREDGING PHA	\$0.00	\$0.00	\$46,000.00	\$19,460.87	\$46,000.00	\$0.00
063000-55230	CANAL PIPE & SEAWALL REPLACEME	\$20,000.00	\$75,000.00	\$75,000.00	\$3,995.00	\$10,000.00	\$80,000.00
	Details for IMPROVEMENTS OTHTHAN BUILDINGS						
	Canal End Seawalls					\$0.00	\$70,000.00
	Pipes thru Seawalls					\$10,000.00	\$10,000.00
063000-55232	MAJOR CANAL CROSSING	\$669,582.75	\$1,735,172.00	\$1,735,172.00	\$1,594,700.83	\$1,735,172.00	\$821,647.00
	Details for IMPROVEMENTS OTHTHAN BUILDINGS						
	Emergency Pipe Lining					\$20,172.00	\$275,000.00
	Pipe Inspections					\$0.00	\$50,000.00
	Pipe Lining					\$1,715,000.00	\$496,647.00
063000-55234	MAJOR CROSSING W-1	\$702,633.72	\$1,021,263.00	\$2,347,997.03	\$1,551,004.02	\$2,964,971.00	\$0.00
	Details for IMPROVEMENTS OTHTHAN BUILDINGS						
	Contingency					\$292,558.00	\$0.00
	Construction					\$2,631,413.00	\$0.00
	CEI					\$41,000.00	\$0.00
063000-99013	L-4(ROYAL PALMS) CONTROL STR	\$2,156.74	\$2,477,681.00	\$2,441,200.97	\$1,096,835.07	\$2,441,201.00	\$0.00
	Details for IMPROVEMENTS OTHTHAN BUILDINGS						

# City of Palm Coast Next Year Budget Analysis

						-43%	-16%
	Construction					\$2,441,201.00	\$0.00
063000-99014	DRAINAGE IMPR PROJECTS	\$3,171.00	\$90,000.00	\$90,000.00	\$39,814.60	\$75,000.00	\$50,000.00
	Details for IMPROVEMENTS OTHTHAN BUILDINGS						
	Construction					\$75,000.00	\$50,000.00
063000-99018	DRAINAGE IMPR - E SECTION	\$1,397,322.63	\$0.00	\$0.00	\$0.00	\$0.00	\$0.00
063000-99025	DRAINAGE BLARE & COLBERT	\$0.00	\$2,500,000.00	\$2,500,000.00	\$31,306.25	\$60,081.00	\$0.00
	Details for IMPROVEMENTS OTHTHAN BUILDINGS						
	Construction					\$60,081.00	\$0.00
063000-99026	DRAIN-LONDON WTY PHASE I	\$70,811.20	\$4,940,000.00	\$4,940,000.00	\$44,551.01	\$54,074.00	\$9,238,139.00
	Details for IMPROVEMENTS OTHTHAN BUILDINGS						
	Construction					\$54,074.00	\$9,238,139.00
063000-99027	STORMWATER FACILITY IMP	\$1,870.00	\$0.00	\$0.00	\$0.00	\$0.00	\$0.00
063000-99028	DRAINAGE IMPR K SECTION	\$37,034.10	\$0.00	\$0.00	\$0.00	\$0.00	\$40,000.00
063000-99043	WEIR REPLACEMENT P-1	\$42,422.70	\$1,336,254.00	\$0.00	\$78.14	\$79.00	\$1,500,000.00
	Details for IMPROVEMENTS OTHTHAN BUILDINGS						
	Construction					\$79.00	\$1,500,000.00
	<b>CAPITAL EXPENDITURES</b>	<b>\$2,985,929.02</b>	<b>\$14,415,370.00</b>	<b>\$14,415,370.00</b>	<b>\$4,453,063.89</b>	<b>\$7,556,578.00</b>	<b>\$12,004,786.00</b>
041100	IT&C ALLOCATION	\$104,392.00	\$104,966.00	\$104,966.00	\$69,976.00	\$104,966.00	\$141,365.00
044100	FLEET REPLACEMENT ALLOCATION	\$12,562.00	\$45,119.00	\$45,119.00	\$30,080.00	\$45,119.00	\$18,284.00
045001	PROPERTY INSURANCE	\$36,888.08	\$51,436.00	\$51,436.00	\$37,069.08	\$51,436.00	\$91,675.00
045002	LIABILITY INSURANCE	\$18,946.56	\$39,755.00	\$39,755.00	\$21,265.17	\$39,755.00	\$58,678.00
045003	AUTOMOBILE INSURANCE	\$706.03	\$1,172.00	\$1,172.00	\$588.80	\$1,172.00	\$1,294.00
046100	FLEET MAINTENANCE ALLOCATION	\$6,162.00	\$6,735.00	\$6,735.00	\$4,488.00	\$6,735.00	\$6,335.00
046102	EMERGENCY COMMUNICATIONS ALLOCATION	\$3,102.00	\$3,593.00	\$3,593.00	\$2,392.00	\$3,593.00	\$7,875.00
	<b>INTERNAL ALLOCATIONS</b>	<b>\$182,758.67</b>	<b>\$252,776.00</b>	<b>\$252,776.00</b>	<b>\$165,859.05</b>	<b>\$252,776.00</b>	<b>\$325,506.00</b>
064999	CONTRA ASSETS	(\$3,967,803.01)	\$0.00	\$0.00	\$0.00	\$0.00	\$0.00
	<b>CONTRA CAPITAL</b>	<b>(\$3,967,803.01)</b>	<b>\$0.00</b>	<b>\$0.00</b>	<b>\$0.00</b>	<b>\$0.00</b>	<b>\$0.00</b>
091501	TRANSFER TO FLEET MANAGEMENT	\$0.00	\$40,578.00	\$40,578.00	\$0.00	\$40,578.00	\$0.00
	Details for TRANSFER TO FLEET MANAGEMENT						
	N17 - FY23 - F150					\$40,578.00	\$0.00
091502	TRANSFER TO FLEET COMMUNICATION	\$1,000.00	\$0.00	\$0.00	\$0.00	\$0.00	\$0.00
091525	TRANSFER TO ITC FUND	\$4,165.00	\$17,330.00	\$17,330.00	\$10,940.00	\$17,330.00	\$0.00
	Details for TRANSFER TO IT INTRN SVC FUND						
	FY23 New Equipment - Stormwater Engineering					\$6,390.00	\$0.00
	FY23 New Position Equipment - Resiliency Compliance Manager					\$5,875.00	\$0.00
	FY23 New Position Equipment - Survey Crew Chief					\$5,065.00	\$0.00
	<b>INTERFUND TRANSFER</b>	<b>\$5,165.00</b>	<b>\$57,908.00</b>	<b>\$57,908.00</b>	<b>\$10,940.00</b>	<b>\$57,908.00</b>	<b>\$0.00</b>



City of Palm Coast  
Capital Improvement Plan

<b>STORMWATER MANAGEMENT FUND</b>	<b>GL</b>	<b>FY 24 Projection</b>	<b>FY 25</b>	<b>FY 26</b>	<b>FY 27</b>	<b>FY 28</b>	<b>FY 29</b>
Starting Fund Balance (Minus Reserves)		5,884,415	3,861,641	506,433	256,160	143,610	1,754,378
<b>Revenues:</b>							
Ad Valorem Taxes		527,724	529,222	530,721	532,220	533,718	545,994
Stormwater Fees		18,685,652	21,736,563	23,977,931	25,488,380	26,071,356	26,749,211
SJRWMD Grant - London Waterway	99026	633,150	271,350	-	-	-	-
New Debt 1 - Series 2024 (10yrs)		1,329,879	-	-	-	-	-
New Debt 1 - Series 2024 (10yrs) Loan Fees		46,378	-	-	-	-	-
New Debt 2 - Series 2025 (20yrs)		-	17,000,000	-	-	-	-
New Debt 2 - Series 2025 (20yrs) - Loan Fees		-	270,000	-	-	-	-
New Debt 3 - Series 2027 (20yrs)		-	-	-	6,200,000	-	-
New Debt 3 - Series 2027 (20yrs) - Loan Fees		-	-	-	195,000	-	-
Misc Revenues		750,000	450,000	450,000	450,000	450,000	450,000
Legislative Priority (P-1)	99043	-	1,250,000	-	-	-	-
Real Time Flood Forecasting		-	275,000	-	-	-	-
Interest on Investments		300,000	150,000	59,600	63,200	64,200	51,924
<b>Transfers:</b>							
American Rescue Plan - London Waterway Expansion	381053	4,289,930	1,838,541	-	-	-	-
<b>Total Revenues</b>		<b>26,562,713</b>	<b>43,770,676</b>	<b>25,018,252</b>	<b>32,928,800</b>	<b>27,119,274</b>	<b>27,797,129</b>
<b>Total Available Funds</b>		<b>32,447,127</b>	<b>47,632,317</b>	<b>25,524,685</b>	<b>33,184,960</b>	<b>27,262,884</b>	<b>29,551,507</b>

<b>STORMWATER MANAGEMENT FUND</b>	<b>GL</b>	<b>FY 24 Projection</b>	<b>FY 25</b>	<b>FY 26</b>	<b>FY 27</b>	<b>FY 28</b>	<b>FY 29</b>
<b>Operating Expenses:</b>							
<b>Operating Expenditures</b>		<b>13,002,764</b>	<b>16,558,510</b>	<b>17,391,020</b>	<b>18,404,535</b>	<b>17,237,057</b>	<b>17,262,650</b>
Stormwater Engineering - 54205509		1,041,126	787,093	826,000	867,000	910,000	956,000
Stormwater Maintenance - 54205511		4,498,908	5,960,619	6,742,000	7,445,000	7,817,000	8,310,000
- New Staff - Freshwater Canal Crew 1/4 yr (1 Spv, 1 Lead, 3 EO, 1 Temp)		236,287	-	-	-	-	-
- New Staff - Equipment Specialist 1/4yr (PG12)		42,847	-	-	-	-	-
- New Staff - Concrete & Asphalt Crew (1 Frmn, 3 EO, 1 Temp)		-	-	348,871	-	-	-
- New Staff - EO III (Pontoon) (PG11)		-	-	-	-	97,288	-
- New Staff - Culvert Crew (EO III & EO)		-	133,092	-	-	-	-
- New Staff - Ditch Crew #2 (1 Frmn, 1, EOIII, 2 EOII, 1 Temp)		-	255,188	-	-	-	-
- New Staff - Swale Specialist (PG12)		-	72,141	-	-	-	-
Stormwater Operations		1,562,355	1,964,143	2,223,000	2,334,000	2,602,000	2,732,000
- New Staff - Citizen Engagement & Outreach Coordinator (PG15)		81,932	-	-	-	-	-
- New Staff - Stormwater Specialist (PG12)		87,019	-	-	-	-	-
- New Staff - Deputy Director of Stormwater & Engineering (PG23)		-	-	-	144,525	-	-
- New Staff - Finance Technician I (PG12)		-	71,668	-	-	-	-
- New Staff - Engineering Technician (PG12)		-	81,458	-	-	-	-
Non-Departmental		1,350,655	1,372,606	1,441,236	1,513,298	1,588,963	1,668,411
- Debt Service		1,601,485	3,285,502	3,234,913	3,525,712	3,521,239	3,521,239
Principal	<b>071000</b>						
- SRF - Stormwater 903040 (To FY26)		282,889	290,104	297,503	-	-	-
- SRF - Stormwater 903070 (To FY30)		150,322	159,986	165,049	175,000	175,240	175,240
- SRF - Stormwater 180400 (To FY42)		64,467	82,714	82,714	82,714	82,714	82,714
- Series 2019A (To FY29)		123,000	126,000	128,000	130,000	131,000	131,000
- Series 2019B (To FY39)		178,000	183,000	187,000	191,000	191,000	191,000
- Series 2022 (To FY41)		340,000	350,000	360,000	370,000	370,000	370,000
- New Debt 1 - Series 2024 (To FY34)		-	112,816	119,021	125,567	132,473	132,473
- New Debt 2 - Series 2025 (To FY45)		-	457,003	485,566	515,914	548,159	548,159
- New Debt 3 - Series 2027 (To FY47)		-	-	-	160,302	171,122	171,122
Interest	<b>072000</b>						
- SRF - Stormwater 903040 (To FY26)		20,281	13,066	5,667	-	-	-
- SRF - Stormwater 903070 (To FY30)		32,310	22,646	17,583	7,632	7,632	7,632
- SRF - Stormwater 180400 (To FY42)		-	-	-	-	-	-
- Series 2019A (To FY29)		18,533	15,618	12,632	11,599	11,470	11,470
- Series 2019B (To FY39)		85,486	81,071	76,533	72,895	71,895	71,895
- Series 2022 (To FY41)		198,653	189,848	180,782	171,458	166,874	166,874
- New Debt 1 - Series 2024 (To FY34)		57,544	72,256	66,051	59,505	52,599	52,599
- New Debt 2 - Series 2025 (To FY45)		-	1,079,374	1,050,812	1,020,463	988,219	988,219
- New Debt 3 - Series 2027 (To FY47)		-	-	-	431,663	420,842	420,842
- Other Debt Service Costs	<b>073000</b>	50,000	50,000	-	-	-	-
- Transfer for Maintenance Operations Center	<b>091300</b>	2,500,000	2,500,000	2,500,000	2,500,000	625,567	-
- Land Acquisition	<b>99026</b>	150	75,000	75,000	75,000	75,000	75,000



<b>STORMWATER MANAGEMENT FUND</b>	<b>GL</b>	<b>FY 24 Projection</b>	<b>FY 25</b>	<b>FY 26</b>	<b>FY 27</b>	<b>FY 28</b>	<b>FY 29</b>
<b>Professional Services</b>	<b>031000</b>	<b>195,000</b>	<b>470,000</b>	<b>353,055</b>	<b>305,610</b>	<b>255,796</b>	<b>261,548</b>
- LIDAR (cost share)		-	-	108,632	-	-	-
- Stormwater Rate Study (Consultant)		-	-	-	55,565	-	-
- City-Wide Infrastructure Stormwater Master Plan		-	-	27,158	27,783	28,422	29,061
- MS4 Permitting Program		145,000	145,000	190,107	194,479	198,952	203,426
- City-Wide Real Time Flood Forecasting		-	275,000	-	-	-	-
- Miscellaneous Services		50,000	50,000	27,158	27,783	28,422	29,061
<b>Contractual Services</b>	<b>034000</b>	<b>297,500</b>	<b>347,000</b>	<b>237,362</b>	<b>193,367</b>	<b>197,815</b>	<b>202,236</b>
- Miscellaneous Services		5,000	20,000	10,863	11,113	11,369	11,624
- Annual Telemetry Subscription - SCADA		14,000	14,000	17,381	17,781	18,190	18,599
- Pump Station Maintenance & Repair		50,000	50,000	43,453	44,452	45,475	46,497
- Water Quality Monitoring Repair		8,000	5,000	-	-	-	-
- Water Control SCADA Support & Service		15,000	15,000	16,295	16,670	17,053	17,436
- Water Control Equipment Replacement & Spare Parts		35,000	45,000	32,590	33,339	34,106	34,873
- Weir Cameras		32,000	40,000	-	-	-	-
- Building Maintenance & Repair		2,000	30,000	2,173	2,223	2,274	2,325
- Landscaping & Irrigation Maintenance & Repairs		20,000	15,000	5,432	5,557	5,684	5,812
- Plumbing Repairs		1,000	1,000	1,086	1,111	1,137	1,162
- Mechanical Repairs		1,000	5,000	1,086	1,111	1,137	1,162
- Electrical Repairs		2,500	10,000	1,086	1,111	1,137	1,162
- Facility Expansion		50,000	35,000	-	-	-	-
- Waste Hauling		2,000	2,000	2,716	3,334	3,411	3,487
- Swale Dirt (Auction)		5,000	5,000	54,316	5,557	5,684	5,812
- Freshwater Alternative Treatments		30,000	30,000	21,726	22,226	22,737	23,249
- Canal Clearing (Removal of Trees & Underbrush)		5,000	5,000	5,432	5,557	5,684	5,812
- Sediment Removal		5,000	5,000	5,432	5,557	5,684	5,784
- Tree Removal		15,000	15,000	16,295	16,670	17,053	17,436

STORMWATER MANAGEMENT FUND	GL	FY 24 Projection	FY 25	FY 26	FY 27	FY 28	FY 29
<b>Projects:</b>							
<b>Saltwater Canal System:</b>	<b>55230</b>	<b>50,000</b>	<b>110,000</b>	<b>115,000</b>	<b>120,000</b>	<b>125,000</b>	<b>130,000</b>
- Pipes Thru Seawalls		10,000	10,000	10,000	10,000	10,000	10,000
- Canal End Seawalls		40,000	100,000	105,000	110,000	115,000	120,000
<b>Stormwater Storage/Detention:</b>	<b>99026</b>						
<b>London Waterway Expansion: Phase 2</b>		-	-	-	675,000	675,000	-
- Design		-	-	-	675,000	675,000	-
<b>London Waterway Expansion: Phase 1</b>	<b>99026</b>	<b>6,466,697</b>	<b>2,771,442</b>	-	-	-	-
- Design & Construction Administration		175,000	75,000	-	-	-	-
- Construction & Contingency		1,368,617	586,550	-	-	-	-
- Construction (Grant - SJRWMD)		633,150	271,350	-	-	-	-
- Construction (ARPA)		4,289,930	1,838,541	-	-	-	-
<b>Lehigh Canal Capacity Improvement (ROAD)</b>	<b>55110</b>	-	850,000	-	-	-	-
- Design		-	850,000	-	-	-	-
<b>Project(s) to be Determined</b>	<b>99510</b>	-	300,000	150,000	1,000,000	-	-
- Design		-	300,000	150,000	-	-	-
- Construction		-	-	-	1,000,000	-	-
<b>Control Structure Replacements:</b>	<b>55001</b>						
<b>Control Structures</b>		<b>100,000</b>	<b>150,000</b>	<b>150,000</b>	<b>150,000</b>	<b>150,000</b>	<b>150,000</b>
- Design		-	50,000	50,000	50,000	50,000	50,000
- Construction		75,000	75,000	75,000	75,000	75,000	75,000
- Structure Repairs		25,000	25,000	25,000	25,000	25,000	25,000
<b>L-4 Weir Replacement (Royal Palm Parkway)</b>	<b>99013</b>	<b>358,603</b>	-	-	-	-	-
- Construction		358,603	-	-	-	-	-
<b>P-1 Weir Replacement (West BT south of Pine Grove)</b>	<b>99043</b>	<b>40,000</b>	<b>1,460,000</b>	-	-	-	-
- Design		40,000	60,000	-	-	-	-
- Construction		-	150,000	-	-	-	-
- Construction (Grant)		-	1,250,000	-	-	-	-
<b>B-1, B-2, &amp; B-3 (Pop offs for Bellaire Waterway)</b>	<b>TBD</b>	-	-	250,000	1,200,000	-	-
- Design		-	-	250,000	-	-	-
- Construction		-	-	-	1,200,000	-	-
<b>W-1 Wier Replacement &amp; Upgrade</b>	<b>55005</b>	-	150,000	-	2,000,000	-	-
- Design		-	150,000	-	-	-	-
- Construction		-	-	-	2,000,000	-	-

<b>STORMWATER MANAGEMENT FUND</b>	<b>GL</b>	<b>FY 24 Projection</b>	<b>FY 25</b>	<b>FY 26</b>	<b>FY 27</b>	<b>FY 28</b>	<b>FY 29</b>
<b>Major Pipe &amp; Canal Crossings (Replacements):</b>							
<b>W-1 (Belle Terre @ BTMS)</b>	<b>55234</b>	<b>220,000</b>	-	-	-	-	-
- Construction		220,000	-	-	-	-	-
<b>M-2 (OKR @ Big Mulberry Creek)</b>	<b>55222</b>	-	<b>1,000,000</b>	-	-	-	-
- Design		-	-	-	-	-	-
- Construction		-	1,000,000	-	-	-	-
<b>Pipe Inspections &amp; Lining</b>	<b>55232</b>	<b>804,228</b>	<b>4,325,000</b>	<b>825,000</b>	<b>2,525,000</b>	<b>525,000</b>	<b>525,000</b>
- FDOT Bridge Inspection Program (22 Culverts)		-	-	-	-	-	-
- Pipe Inspections		-	50,000	50,000	-	-	-
- Pipe Replacements / Lining		493,870	-	500,000	250,000	250,000	250,000
- Pipe Lining		-	4,000,000	-	2,000,000	-	-
- Contingency (Emergency Linings)		310,358	275,000	275,000	275,000	275,000	275,000
<b>Capacity Improvements:</b>							
<b>Drainage Improvement Projects</b>	<b>99014</b>	<b>115,000</b>	<b>50,000</b>	<b>300,000</b>	<b>300,000</b>	<b>300,000</b>	<b>300,000</b>
- Design		115,000	50,000	50,000	50,000	50,000	50,000
- Construction		-	-	250,000	250,000	250,000	250,000
<b>Ditch &amp; Pipe Rehab &amp; Renewal</b>	<b>55003</b>	<b>50,000</b>	<b>50,000</b>	<b>100,000</b>	<b>550,000</b>	<b>200,000</b>	<b>650,000</b>
- Design		-	50,000	100,000	50,000	50,000	50,000
- Construction		50,000	-	-	500,000	150,000	600,000
<b>Blare &amp; Colbert</b>	<b>99025</b>	<b>6,188</b>	<b>5,000,000</b>	-	-	-	-
- Design, CEI, Contingency		6,188	800,000	-	-	-	-
- Construction (HMGP or Loan)		-	3,150,000	-	-	-	-
- Construction,		-	1,050,000	-	-	-	-
<b>Drainage Improvement - K Section</b>	<b>99028</b>	<b>24,000</b>	<b>6,500,000</b>	-	-	-	-
- Design, CEI, Contingency		24,000	750,000	-	-	-	-
- Construction (HMGP or Loan)		-	4,312,500	-	-	-	-
- Construction		-	1,437,500	-	-	-	-
<b>Freshwater Canal Dredging:</b>							
<b>Pine Grove Waterway West</b>	<b>55010</b>	<b>33,000</b>	<b>1,200,000</b>	-	-	-	-
- Design		33,000	-	-	-	-	-
- Construction, CEI, Contingency		-	1,200,000	-	-	-	-

<b>STORMWATER MANAGEMENT FUND</b>	<b>GL</b>	<b>FY 24 Projection</b>	<b>FY 25</b>	<b>FY 26</b>	<b>FY 27</b>	<b>FY 28</b>	<b>FY 29</b>
<b>Pipe Replacements:</b>							
<b>Pipe Replacements</b>	<b>55003</b>	<b>946,000</b>	<b>995,000</b>	<b>785,000</b>	<b>840,000</b>	<b>895,000</b>	<b>950,000</b>
- Pipe & Miscellaneous Materials		246,000	250,000	255,000	265,000	275,000	285,000
- Emergency Pipe Replacements		90,000	90,000	95,000	100,000	105,000	110,000
- Road Base & Aggregates		80,000	100,000	105,000	110,000	115,000	120,000
- Concrete for Spillways		65,000	75,000	75,000	80,000	85,000	90,000
- Asphalt		-	-	65,000	70,000	75,000	80,000
- Catch Basins		15,000	15,000	25,000	30,000	35,000	40,000
- Sod		45,000	55,000	60,000	65,000	70,000	75,000
- Debris Removal		45,000	45,000	55,000	60,000	65,000	70,000
- Equipment Rental		10,000	15,000	20,000	25,000	30,000	35,000
- Contract Work		350,000	350,000	30,000	35,000	40,000	45,000
<b>System Maintenance Rehab &amp; Renewal:</b>	<b>034000</b>						
<b>Swale Maintenance Rehab &amp; Renewal</b>	<b>55105</b>	<b>743,000</b>	<b>2,020,000</b>	<b>787,500</b>	<b>835,000</b>	<b>882,500</b>	<b>935,000</b>
- Driveway Replacements		25,000	30,000	32,500	35,000	37,500	40,000
- Sod		675,000	650,000	685,000	720,000	755,000	795,000
- Debris Removal		20,000	20,000	25,000	30,000	35,000	40,000
- Pipe		8,000	10,000	15,000	20,000	25,000	30,000
- Contract Work		5,000	1,300,000	10,000	10,000	10,000	10,000
- Equipment Rental		10,000	10,000	20,000	20,000	20,000	20,000
<b>Freshwater Canal Maintenance</b>	<b>55105</b>	<b>73,000</b>	<b>140,000</b>	<b>143,500</b>	<b>167,000</b>	<b>190,500</b>	<b>214,000</b>
- Aggregates & Erosion Control		20,000	40,000	50,000	55,000	60,000	65,000
- Sod		8,000	15,000	17,500	20,000	22,500	25,000
- Boat Ramp and Headwall Repair		15,000	50,000	25,000	30,000	35,000	40,000
- Debris Removal		10,000	10,000	11,000	12,000	13,000	14,000
- Equipment Rental		10,000	10,000	20,000	25,000	30,000	35,000
- Contract Work		10,000	15,000	20,000	25,000	30,000	35,000
<b>Ditch Maintenance and Rehab.</b>	<b>55003</b>	<b>145,000</b>	<b>160,000</b>	<b>200,000</b>	<b>210,000</b>	<b>220,000</b>	<b>230,000</b>
- Sod		35,000	50,000	55,000	60,000	65,000	70,000
- Debris Removal		30,000	30,000	50,000	50,000	50,000	50,000
- Contract Work		40,000	40,000	40,000	40,000	40,000	40,000
- Equipment Rental		10,000	10,000	20,000	20,000	20,000	20,000
- Aggregates & Erosion Control		30,000	30,000	35,000	40,000	45,000	50,000
<b>Weed Control</b>	<b>99019</b>	<b>820,853</b>	<b>865,846</b>	<b>932,838</b>	<b>932,838</b>	<b>932,838</b>	<b>932,838</b>
- Weed Control on Freshwater Canals & Ditches		799,853	839,846	881,838	881,838	881,838	881,838
- Weed Control Contingency		20,000	25,000	50,000	50,000	50,000	50,000
- Weed Control Cost Share Ribbon Lake		1,000	1,000	1,000	1,000	1,000	1,000



<b>STORMWATER MANAGEMENT FUND</b>	<b>GL</b>	<b>FY 24 Projection</b>	<b>FY 25</b>	<b>FY 26</b>	<b>FY 27</b>	<b>FY 28</b>	<b>FY 29</b>
<b>New Equipment</b>	<b>064000</b>	<b>4,094,654</b>	<b>1,653,086</b>	<b>2,048,250</b>	<b>2,133,000</b>	<b>2,222,000</b>	<b>3,206,000</b>
- Stormwater Engineering Fleet Replacement Allocation (Base Amount)		18,284	24,557	32,250	34,000	36,000	38,000
- Stormwater Maintenance Fleet Replacement Allocation (Base Amount)		1,448,453	1,413,249	1,609,000	1,689,000	1,773,000	1,862,000
- Stormwater Operations Fleet Replacement Allocation (Base Amount)		30,645	54,292	57,000	60,000	63,000	66,000
- FY24 - N1 - F150	Project Specialist	54,176	-	-	-	-	-
- FY24 - N27 - Ford Explorer	Director/Deput	39,707	-	-	-	-	-
- FY25 - N4 - FORD F150	Swäre	-	62,619	-	-	-	-
- FY24 - N2 - Chevy 2500 Service (Rate Study)	Specialist	-	-	-	-	-	-
- FY28 - N3 - Pontoon Excavator (New Equipment) exchange for Vac Con requested in FY	(Pontoon / Menz	-	-	-	-	-	100,000
- FY24 - N6 - F150 (Rate Study)	Canal Crew	53,801	-	-	-	-	790,000
- FY24 - N8 - F250 Crew (Rate Study)	Canal Crew	61,460	-	-	-	-	-
- FY24 - N11 - Airboat (Rate Study)	Canal Crew	63,840	-	-	-	-	-
- FY23 - N14 - Tow Master T-50RG - Trailer		54,355	-	-	-	-	-
- FY24 - N15 - Hydraulic Angle Broom & Concrete Breaker	Pipe Crew	20,767	-	-	-	-	-
- FY23 - N16 - Ext Cab 4x4 F150		44,874	-	-	-	-	-
- FY24 - N16 - Cargo Mate Enclosed Trailer	Pipe Crew	13,106	-	-	-	-	-
- FY24 - N17 - F250 Service Body (Rate Study)	Canal Crew	82,860	-	-	-	-	-
- FY24 - N18 - Enclosed Trailer (Rate Study)	Canal Crew	8,667	-	-	-	-	-
- FY24 - N19 - Skid Steer (Rate Study)	Canal Crew	101,584	-	-	-	-	-
- FY24 - N20 - Zero Turn Mower (Rate Study)	Canal Crew	14,299	-	-	-	-	-
- FY24 - N21 - Western Star Dump (New Equipment) - Remove from loan	Con./Asp. Crew	198,738	-	-	-	-	-
- FY24 - N22 - Towmaster Trailer (Rate Study)	Con./Asp. Crew	56,586	-	-	-	-	-
- FY24 - N23 - CAT Excavator (Rate Study) - remove from loan purchased in FY24	Ditch Crew	98,103	-	-	-	-	-
- FY24 - N24 - Asphalt Roller (New Equipment) Loan	Con./Asp. Crew	67,182	-	-	-	-	-
- FY24 - N25 - F250 Service Body (Rate Study)	Con./Asp. Crew	79,699	-	-	-	-	-
- FY24 - N26 - F350 Dump (Rate Study - Loan)	Con./Asp. Crew	94,024	-	-	-	-	-
- FY24 - N28 - Western Star Dump (Rate Study)	Ditch Crew	198,738	-	-	-	-	-
- FY24 - N29 - Towmaster (Rate Study)	Ditch Crew	56,586	-	-	-	-	-
- FY24 - N30 - CAT Excavator (Rate Study - Loan)	Con./Asp. Crew	98,103	-	-	-	-	-
- FY24 - N31 - CAT Excavator (Rate Study-Loan)	Ditch Crew	98,103	-	-	-	-	-
- FY24 - N32 - F250 Service Body (Rate Study)	Ditch Crew	79,699	-	-	-	-	-
- FY24 - N33 - F350 Dump (Rate Study - Loan)	Ditch Crew	94,024	-	-	-	-	-
- FY24 - N34 - F250 Service (Rate Study)	Equip. Specialist	84,486	-	-	-	-	-
- FY24 - N12 - Vac-Con (New Equipment - Loan) instead for 24-N3 remove from loan	Culvert Crew	679,705	-	-	-	-	-
- FY25 - N3 - Emergency Dewatering Pump-Weirs/PS (New Equipment)	Canal Crew	-	65,159	-	-	-	-
- FY25 - N6 - Sure-Trac Dump Trailer-Spot Regrade (New Equipment)	Ditch Crew	-	13,680	-	-	-	-
- FY25 - N5 - Plate Compactor (Replacement/Upgrade - no asset#)	Pipe Crew	-	19,530	-	-	-	-
- ADDITIONAL ALLOCATION & CONTINGENCY		-	-	350,000	350,000	350,000	350,000
<b>In Lieu of Tax Transfer</b>	<b>092001</b>	<b>148,751</b>	<b>156,914</b>				
<b>Total Expenditures</b>		<b>28,585,487</b>	<b>47,125,884</b>	<b>24,768,525</b>	<b>32,541,350</b>	<b>25,008,506</b>	<b>25,949,272</b>
<b>Reserves (change from prior fiscal year)</b>		-	-	<b>500,000</b>	<b>500,000</b>	<b>500,000</b>	-
<b>Available Funds End of Year</b>		<b>3,861,641</b>	<b>506,433</b>	<b>256,160</b>	<b>143,610</b>	<b>1,754,378</b>	<b>3,602,236</b>

CRS PARTICIPATION

STATE PROFILE

Select a state: **Florida**

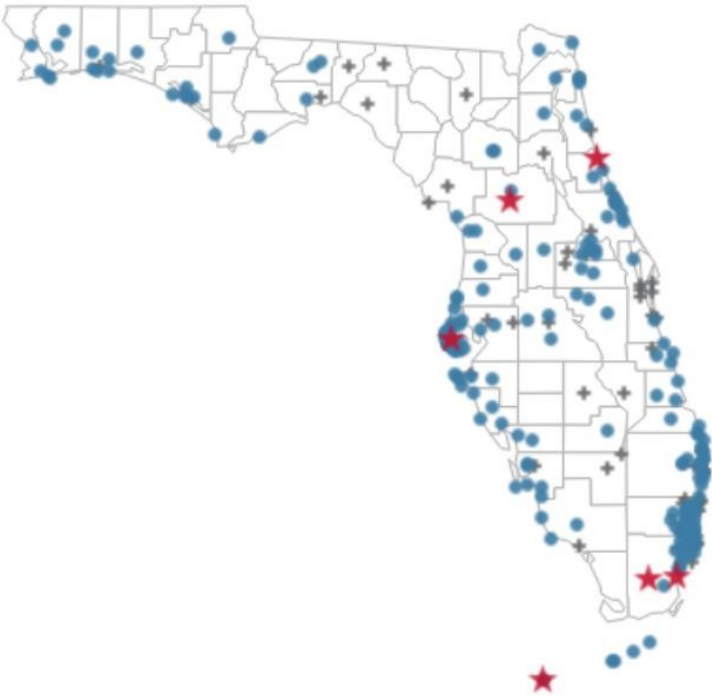
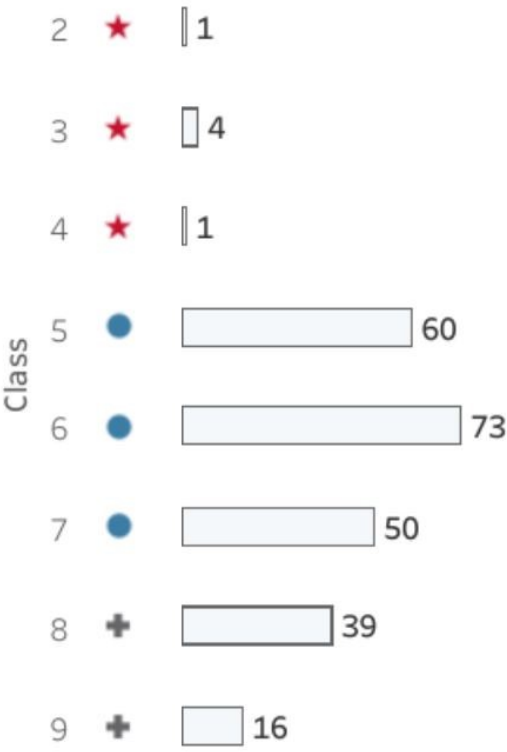
▼

● Data updated October 2024

Communities	Policies in Force	Premiums
244	1.2M	\$806.4M

COMMUNITIES

Show as table



## Frequently Asked Questions

# Community Rating System Discount

---

FEMA and its National Flood Insurance Program (NFIP) offer the Community Rating System (CRS) program to further protect NFIP communities against flood damage and provide NFIP premium discounts to communities that choose to participate. Use this FAQ to find answers to common questions about the CRS program for policyholders.

## CRS & Community Participation Overview

### 1. What is the CRS and why does it provide a discount?

The CRS is a voluntary incentive program for communities that participate in the NFIP. While all NFIP communities must enact minimum floodplain management requirements, the CRS recognizes communities whose floodplain management standards exceed NFIP minimums. By incentivizing proactive measures communities can enforce to mitigate flood damage with premium discounts for policyholders, the CRS helps the NFIP build a flood-resilient nation and lessens the personal and financial devastation flooding can bring.

### 2. What communities participate in the CRS?

All communities across the U.S. that participate in the NFIP are eligible to participate in the CRS. As of April 2024, there are more than 1,700 CRS participating communities, providing discounts to more than 3.3 million policyholders.

For a list of CRS participating communities, visit the [NFIP Community Status Book](#).

### 3. Where might the CRS discount not apply?

Usually, the CRS discount applies to all NFIP policies throughout a CRS community. However, some exceptions exist. The CRS discount is not applied when:

- The policy would exceed the maximum rate cap discount with the full CRS discount. Maximum premium rate caps are a policyholder benefit that establish a limit for your annual premium cost. Policies already discounted due to rate caps or other applicable discounts may receive a portion of a CRS discount, or none at all.
- The insured building is not in compliance with community floodplain management regulations or has known floodplain management violations. Violations disqualify a property from receiving discounts because they undermine the CRS' objective to reward risk reduction practices. Skip to question 10 for information about updating your policy once any violations are corrected.
- The policy is a Group Flood Insurance Policy (GFIP) or is a provisionally rated policy. These types of policies have specific rating structures and eligibility criteria that may not align with standard discount programs.
- The community is in the initial stages of joining the NFIP and listed as an NFIP Emergency Program community. Communities in this phase have limited access to certain benefits and discounts until they fully participate in the NFIP.



# FEMA

#### 4. How is a CRS class determined?

FEMA reviews each community's efforts to implement enhanced floodplain management regulations and assigns each a credit point value in accordance with guidance from the [Coordinator's Manual](#). The CRS credit points that the community earns are then used to establish the CRS class.

CRS classes range from 1 to 10. The premium discounts for eligible policies within each CRS class are listed in the following table. To learn more about what the CRS credits, review the FEMA CRS [Local Official's Guide](#).

Community Rating System Classes and Discount Table										
CRS Class	10	9	8	7	6	5	4	3	2	1
CRS Discount (Up to Premium Reduction)	0%	5%	10%	15%	20%	25%	30%	35%	40%	45%

## Understanding Discounts & Premiums

#### 5. How is the CRS discount calculated?

A property's CRS discount is calculated by FEMA's rating engine based the community's CRS class.

#### 6. Can I receive multiple discounts on my premium?

Yes. NFIP policies may be eligible for other discounts, such as those for mitigation efforts. For both the CRS and other discounts, FEMA will apply the best discount available to your premium.

However, some discounts can't be combined in full as discussed in question 3. For example, if the statutory annual increase cap provides a greater discount to your premium than the CRS discount, the annual increase cap will be applied instead.

Speak to your flood insurance agent for questions specific to your policy.

#### 7. Who receives the CRS discount in CRS communities?

The CRS discount is available to all NFIP policyholders in CRS communities—if none of the exceptions in question 3 apply.

## Information for Policyholders

#### 8. How do I receive a CRS discount?

FEMA's rating engine automatically applies the discount to premiums using the community's Community Identification Number (CID). NFIP policies at their full risk premium will receive the CRS discount immediately. No additional action is required on your part unless you feel something is incorrect.

The [CRS Discount Guide](#) helps explain how the CRS discount is reflected in annual premiums.

#### 9. If my community is a CRS community, what can I do if my policy is not receiving the CRS discount?

Contact your insurance agent or insurer to find out why you might be ineligible. Review the answers to question 3 for possible reasons or explore pages 3.7 and 3.8 of the [NFIP Flood Insurance Manual](#).

**10. My property is listed as being in violation of floodplain management standards. What should I do?**

The only way to have your property removed from FEMA's floodplain management violation list is to speak with your community officials or community floodplain administrator. They can work with your community or state to confirm the status and provide the information you need to show compliance.

Upon review of the documentation and a determination that your structure is compliant with the floodplain management standards, your community floodplain administrator may contact the State NFIP Coordinator or FEMA regional office to remove your property.

Work with your flood insurance agent or provider for how and when updates to your property's CRS discount will take effect.

**11. Why did my CRS discount change upon my policy's renewal?**

Updates to your community's CRS class may affect your CRS discount at the time of your policy's writing or renewal. CRS classification updates occur in April and October of each year. If your CRS discount changes, compare your policy's effective date to your community's CRS effective date.

Refer to question 14 to find your community's CRS status.

**12. How can I update or review my property's CRS designation and/or other discounts?**

Contact your flood insurance agent or company for updates to your property's CRS discount and premium. They can determine if the correct CID and CRS class were applied and make any corrections.

**13. How can my community request to participate in the CRS?**

The decision to join the CRS is up to a community's elected officials. Contact your local elected officials and encourage them to consider joining.

A community can request to participate in the CRS at any time. To participate, your community will need to meet eligibility criteria and apply to FEMA. The application requires details about your community's floodplain management practices and flood mitigation activities. Once an eligibility determination is made, your community will work with the FEMA regional office contractor.

Revisit question 4 to understand how your community's efforts affect its CRS Class determination and policyholders' premiums.

**14. How do I check the status of my community's CRS class?**

A list of all current CRS communities and their CRS class can be found in the [NFIP Community Status Book](#). You may also contact your floodplain administrator or flood insurance agent/provider to confirm your community's status and ask about updates to your community's CRS class.

**15. Can my community's CRS status change?**

Yes, your community's classification may change depending on the level of continued floodplain management efforts. For example, your community can improve its CRS class by implementing more CRS-approved flood damage reduction activities. For more information, contact your floodplain administrator.

For more information on the CRS, visit [FEMA's Community Rating System webpage](#). For details on the NFIP premium rating methodology and the CRS discount for NFIP policyholders, visit [floodsmart.gov](#). You may also contact your insurance agent or the FEMA Mapping and Insurance eXchange (FMIX) Customer Care Center—chat live with a specialist from 9 a.m. to 5 p.m. ET Monday-Friday, email [FEMA-FMIX@fema.dhs.gov](mailto:FEMA-FMIX@fema.dhs.gov) or call (877) 336-2627.