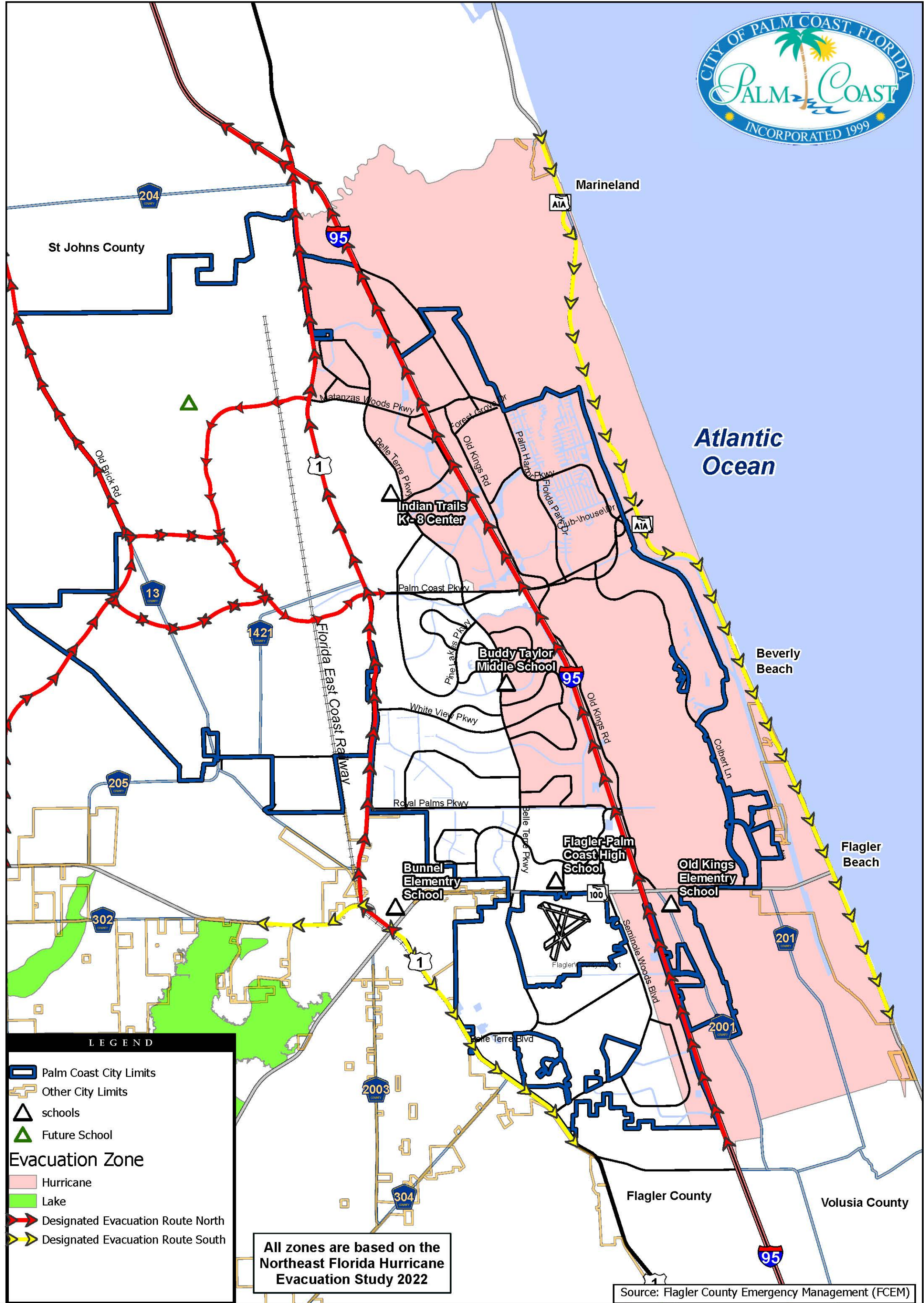
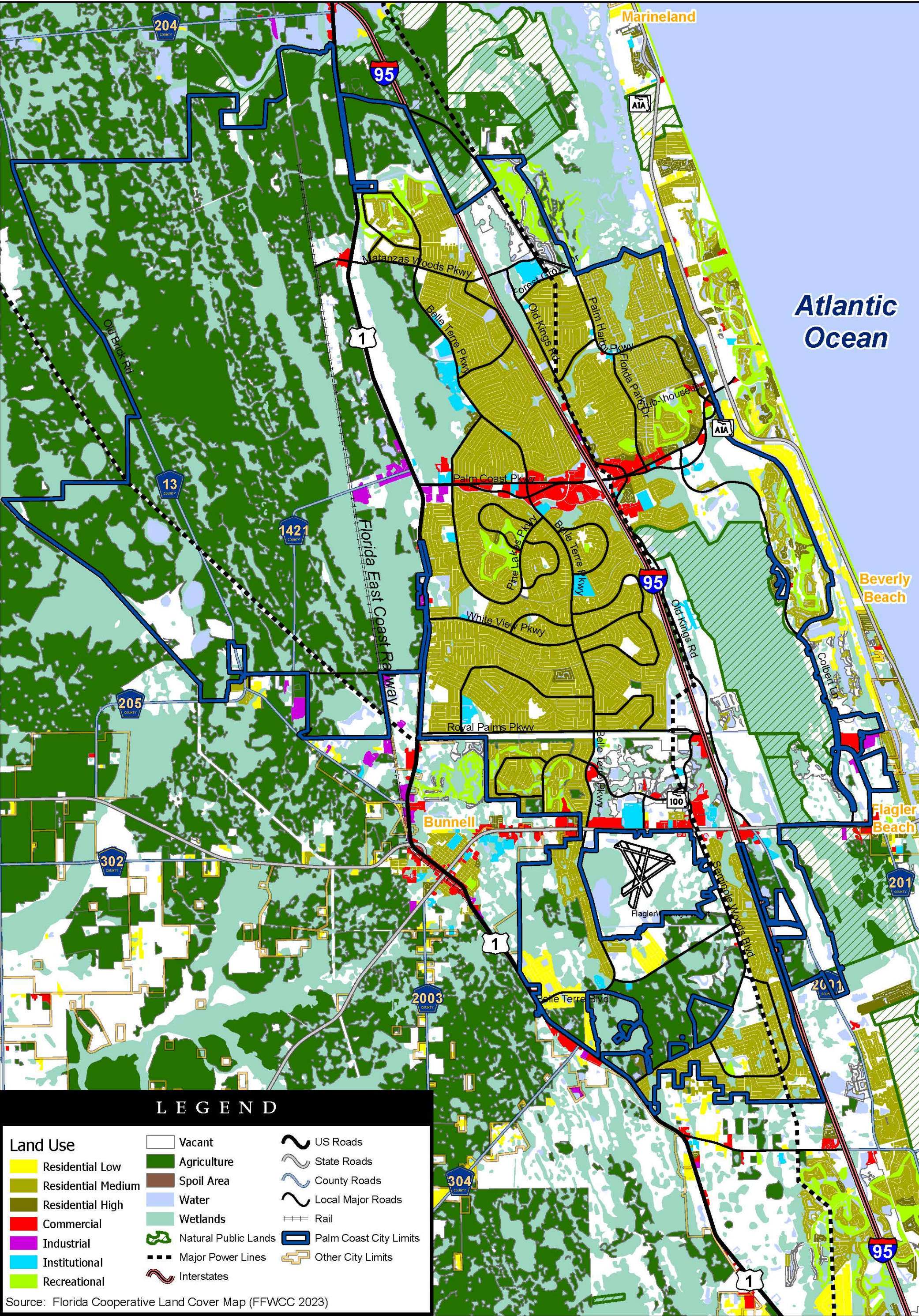


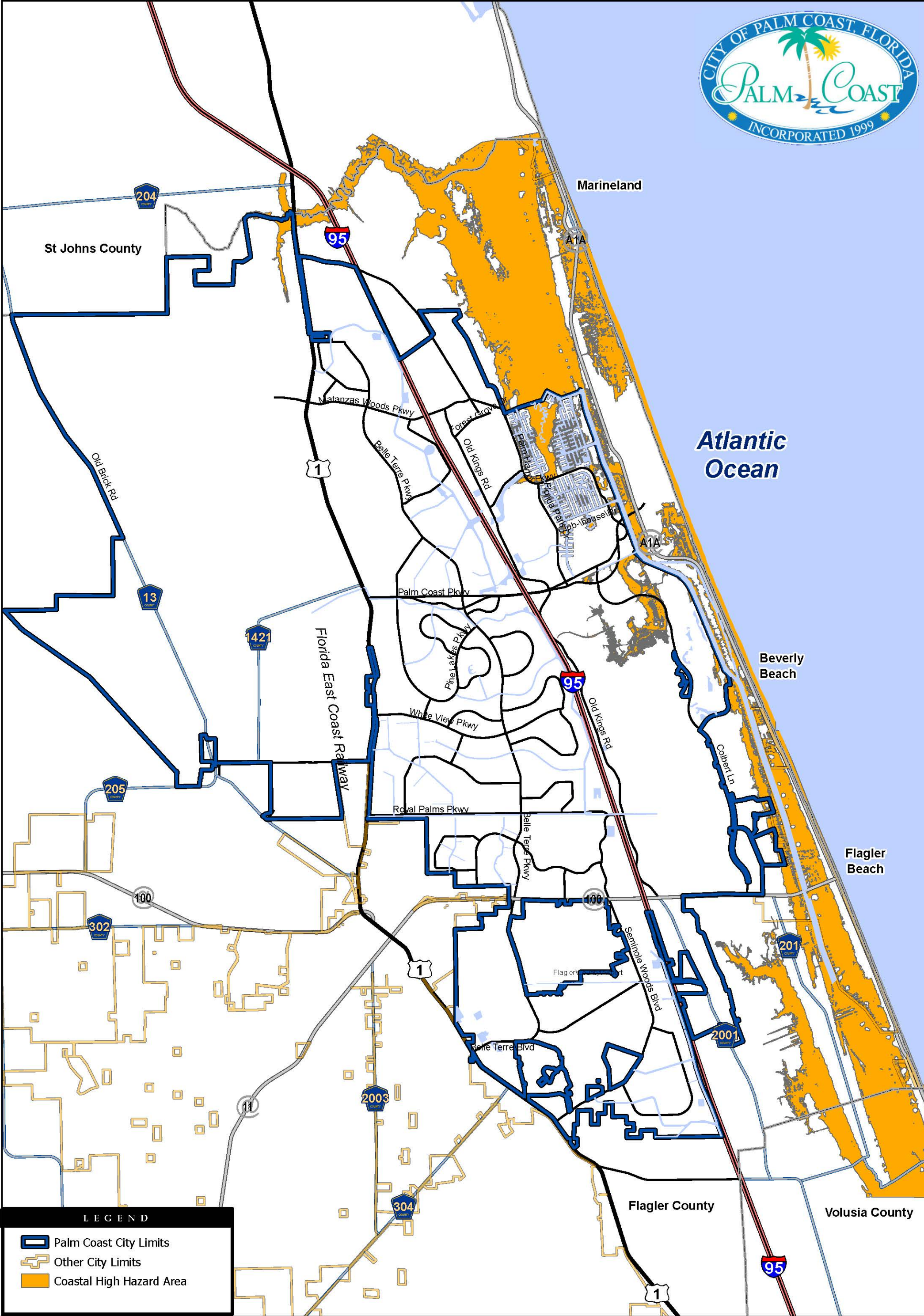
2050 COMPREHENSIVE PLAN MAP SERIES

MAP NUMBER	MAP TITLE
CP-1.1	Existing Land Use
CP-1.2	Generalized Location of Historic and Archeological Resources
CP-1.3	Future Land Use
CP-1.4	Coastal High Hazard Area
CP-2.1	Existing Transportation Facilities
CP-2.1a	Major Public Transit Trip Generators (County Owned and Operated)
CP-2.2	Adopted Road Functional Classification
CP-2.3	Existing Peak Hour Roadway Level of Service Standards
CP-2.4	Existing Peak Hour Roadway Level of Service Performance
CP-2.5	Existing Congestion Levels
CP-2.6	Existing Bicycle/Pedestrian Facilities
CP-2.7	2050 Emergency Evacuation Road Network and Evacuation Shelters
CP-2.8a	2030 Number of Lanes
CP-2.8b	2050 Number of Lanes
CP-2.9	2050 Future Functional Classification
CP-2.10	Greenway and Trail Listing
CP-2.11	Roadway Agency/Jurisdiction Responsibility 2050
CP-2.12	2050 Level of Service Performance
CP-2.13	2050 Transportation Facilities
CP-4.1	Palm Coast Park Lands
CP-4.2	Recreation Service Areas
CP-5.1	Water Service Area
CP-5.2	Water Infrastructure
CP-5.3	Sanitary Sewer Service Area
CP-6.1	Wetlands and Surface Waters
CP-6.2	100 Year Floodplain
CP-6.3	Soils
CP-6.4	Hurricane Planning Area





Generalized Location of Historic and Archaeological Resources (CP-1.2)



LEGEND

- Palm Coast City Limits
- Other City Limits
- Coastal High Hazard Area



Source: Florida Department of Transportation (FDOT)

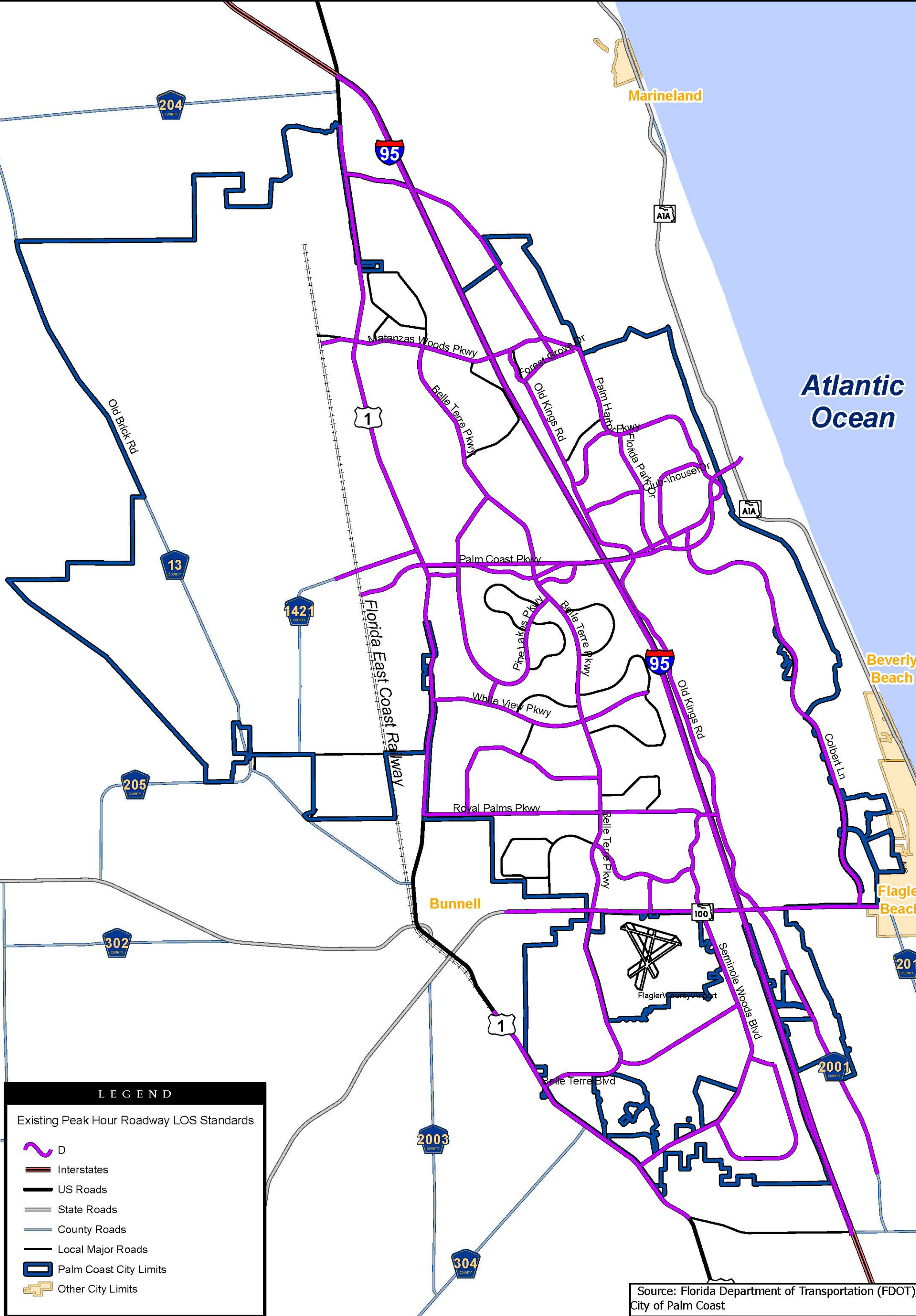


City of Palm Coast Comprehensive Plan

Adopted Road Functional Classification (CP-2.2)

Draft Date : May 15, 2024

Print Date: July 10, 2024



LEGEND

Existing Peak Hour Roadway LOS Standards

D

Interstates

US Roads

State Roads

County Roads

Local Major Roads

Palm Coast City Limits

Other City Limits

Source: Florida Department of Transportation (FDOT)/
City of Palm Coast

0

1

2

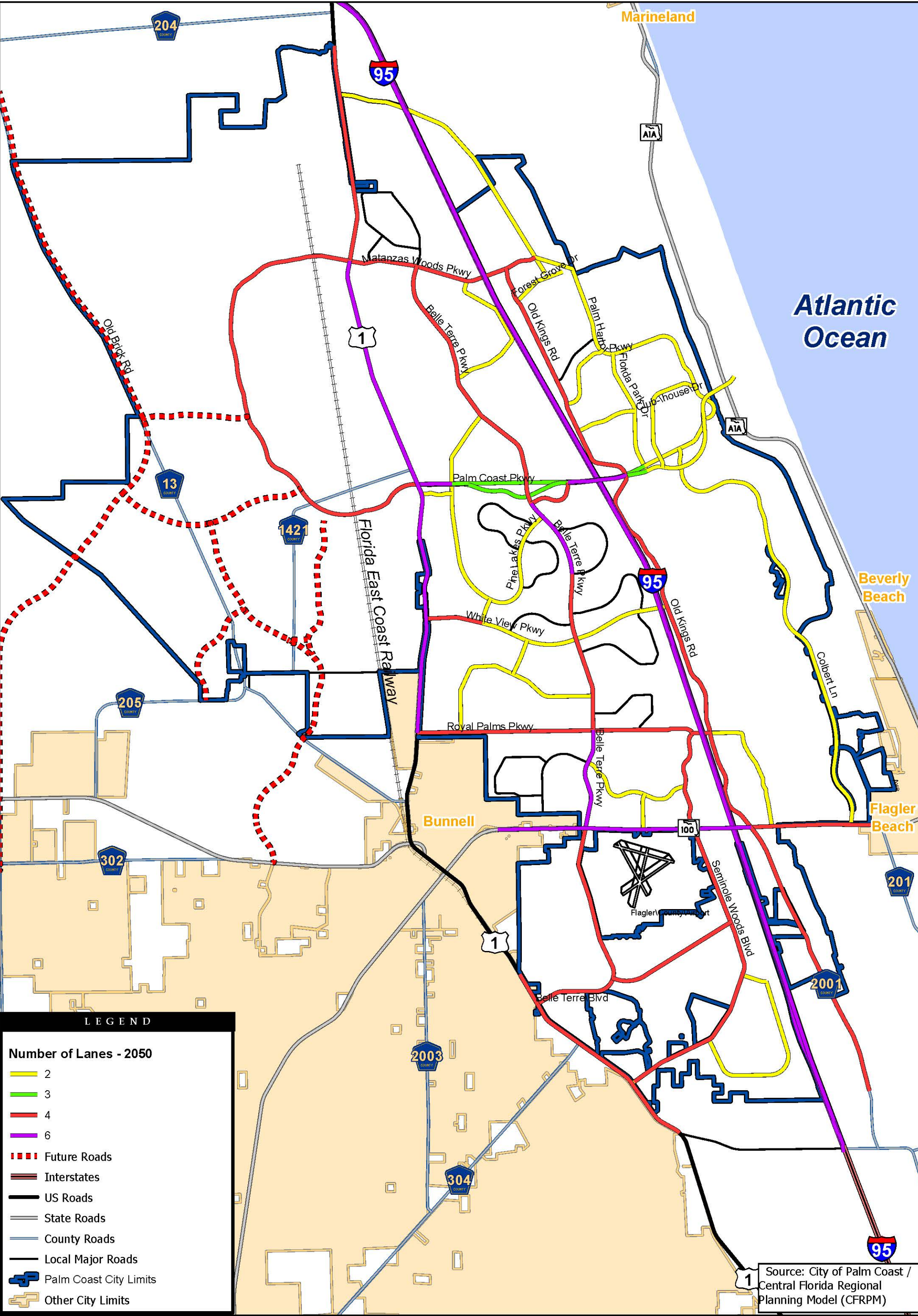
Miles

City of Palm Coast Comprehensive Plan

Adopted Peak Hour Roadway LOS Standards (CP-2.3)

Draft Date : April 29, 2024

Print Date: July 10, 2024



Source: City of Palm Coast /
Central Florida Regional
Planning Model (CFRPM)

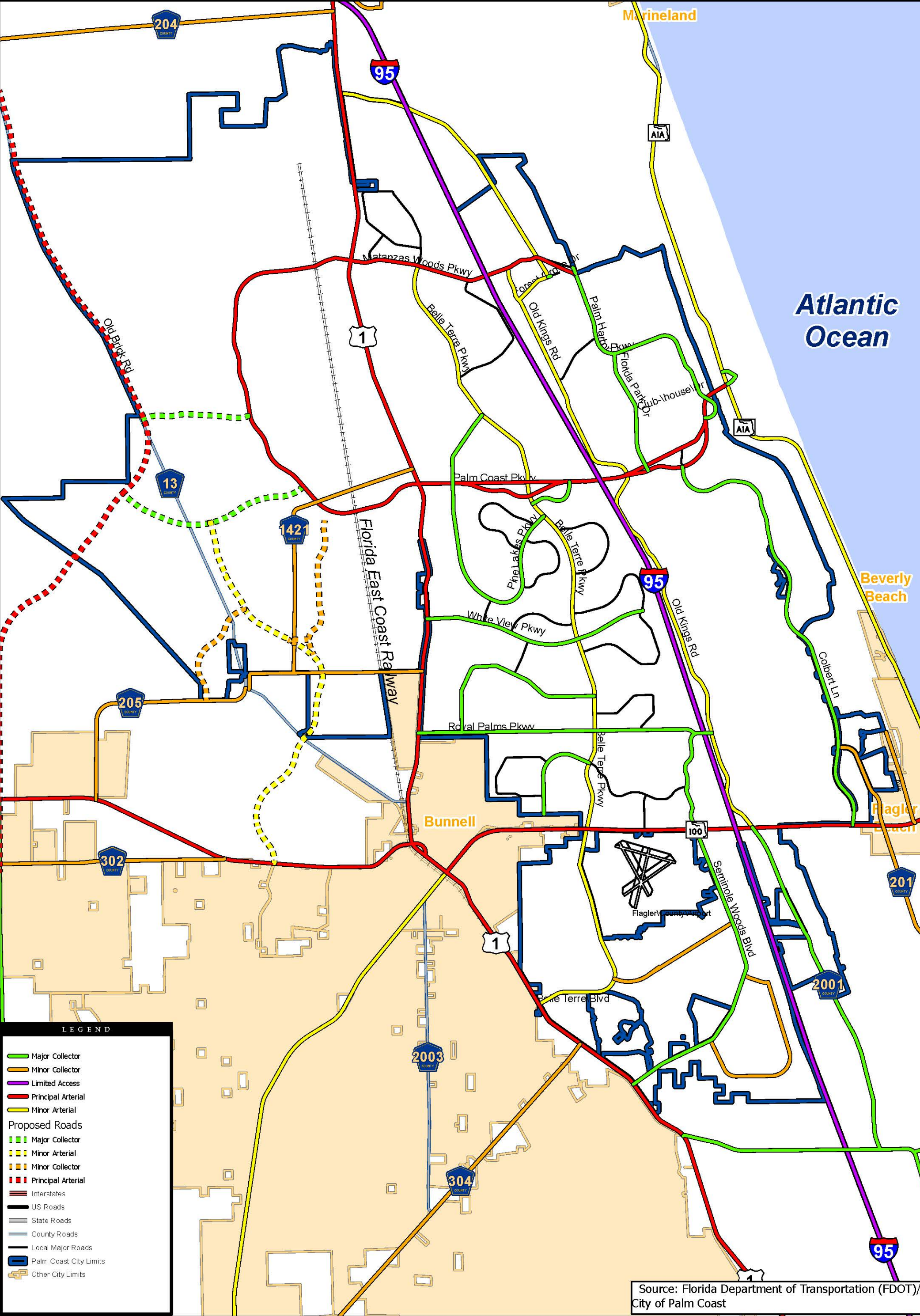


City of Palm Coast Comprehensive Plan

2050 Number of Lanes (CP-2.8b)

Draft Date : May 13, 2024

Print Date: July 10, 2024

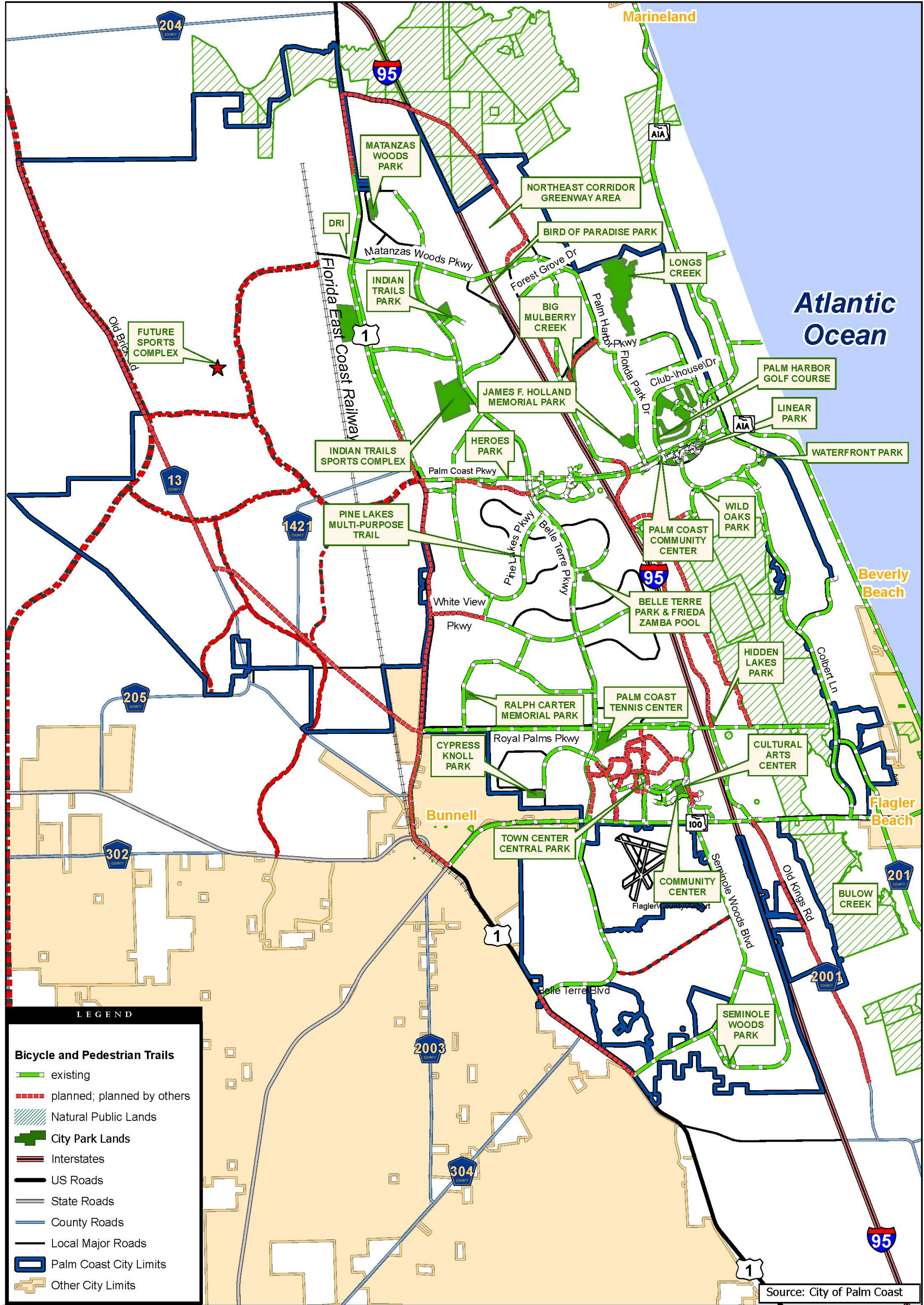


City of Palm Coast Comprehensive Plan

Future Functional Classification (CP-2.9)

Draft Date : July 10, 2024

Print Date: July 10, 2024



Source: City of Palm Coast



City of Palm Coast Comprehensive Plan

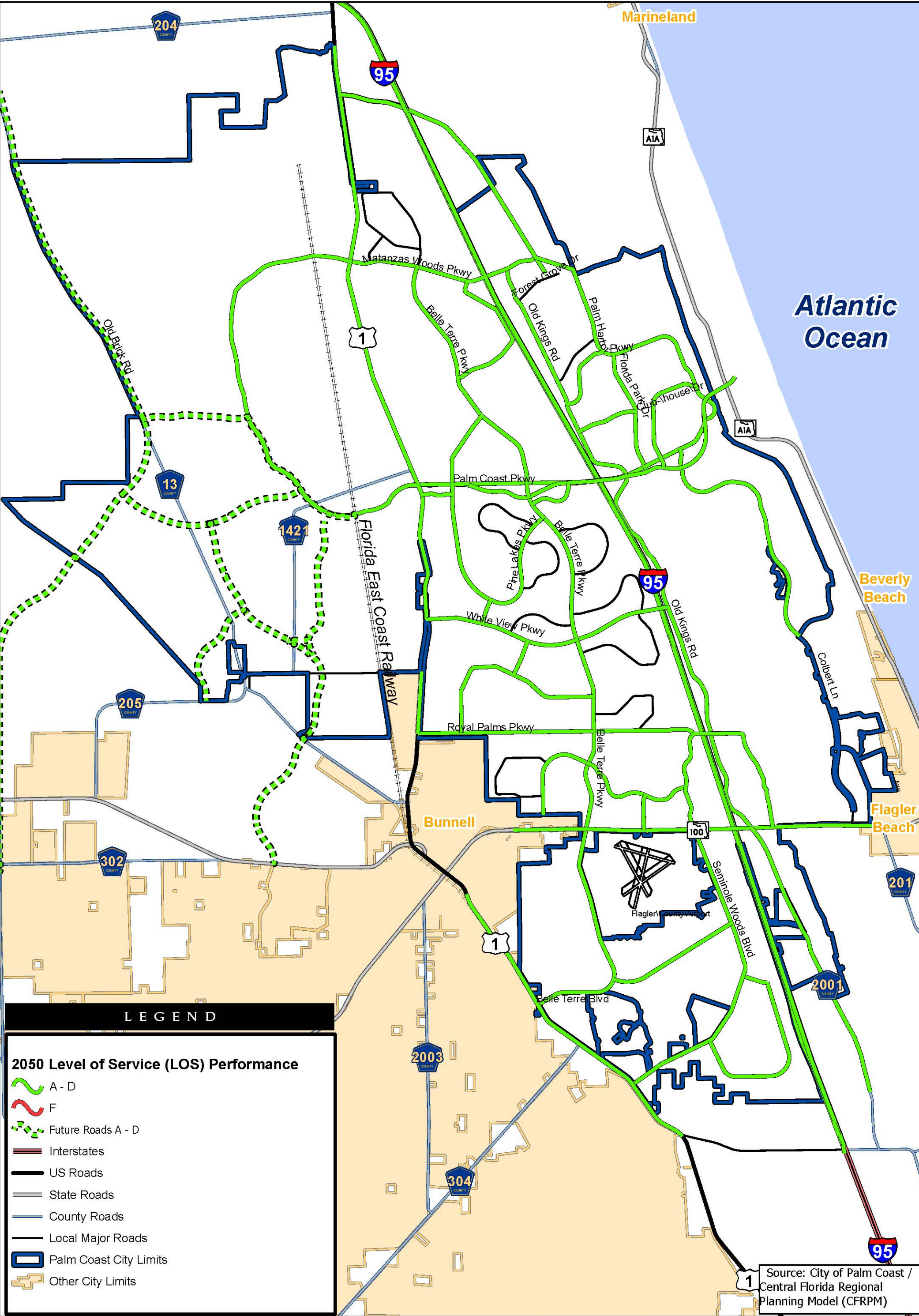
Greenway and Trail Listing (CP-2.10)

Draft Date : July 10, 2024
Print Date: July 10, 2024



Source: City of Palm Coast



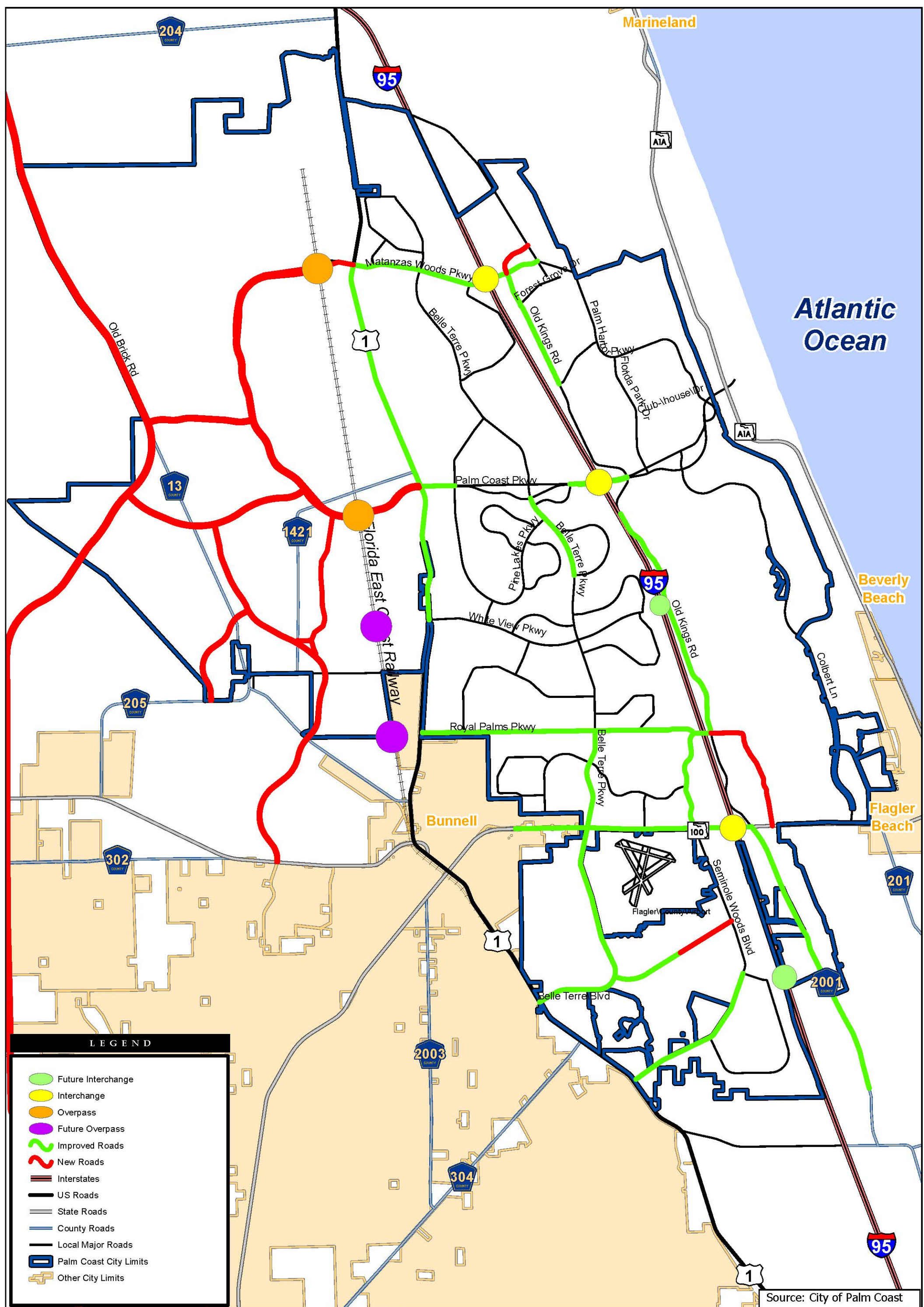


City of Palm Coast Comprehensive Plan

2050 LOS Performance (CP-2.12)

Draft Date : July 10, 2024

Print Date: July 10, 2024



Source: City of Palm Coast

Draft Date : July 10. 2024

Print Date: July 10, 2024



Atlantic Ocean

Beverly Beach

Flagler Beach

Source: City of Palm Coast - Parks Master Plan 2023

Draft Date : July 10, 2024

Print Date: July 10, 2024

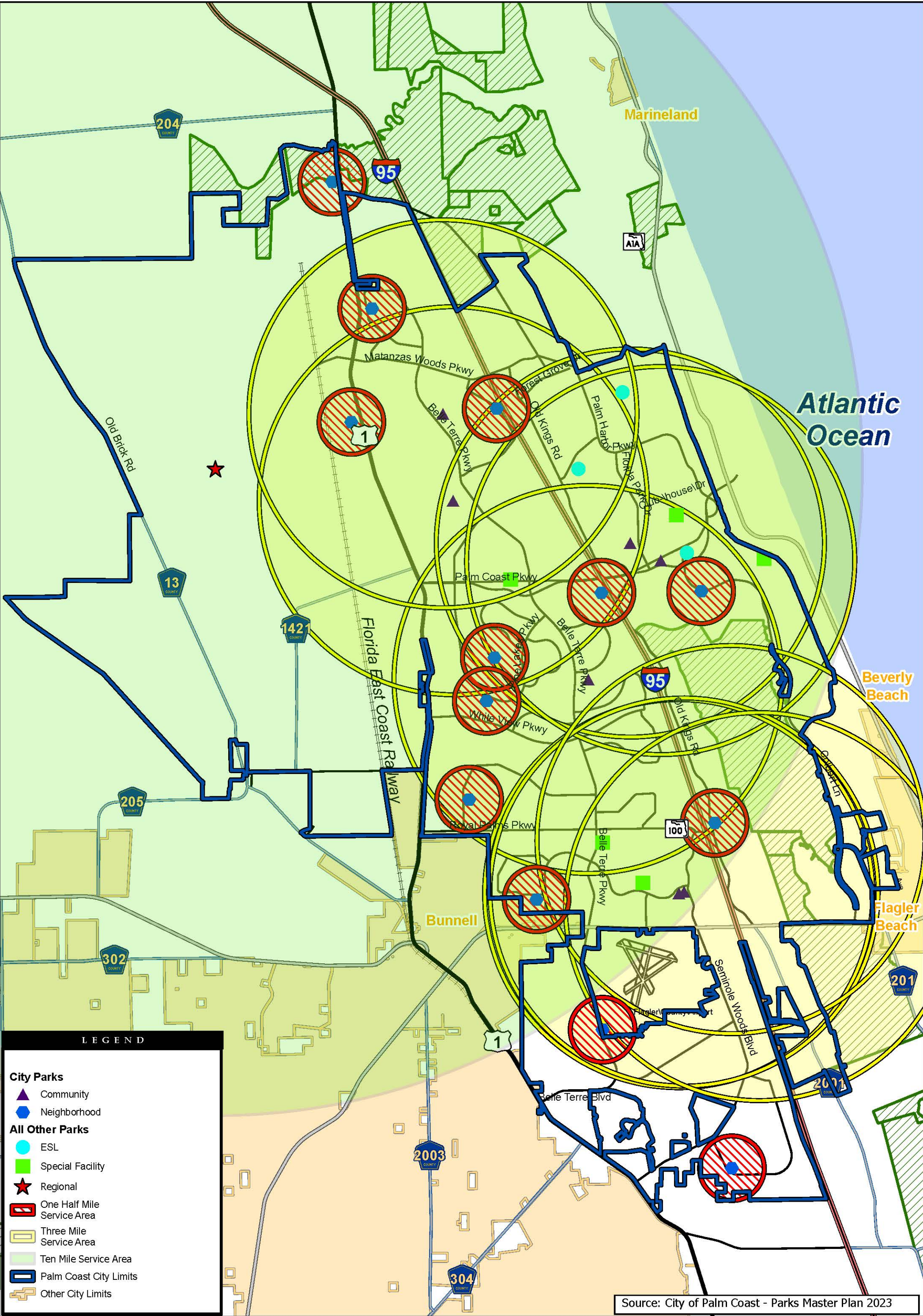
City of Palm Coast Comprehensive Plan
Palm Coast Park Lands (CP-4.1)

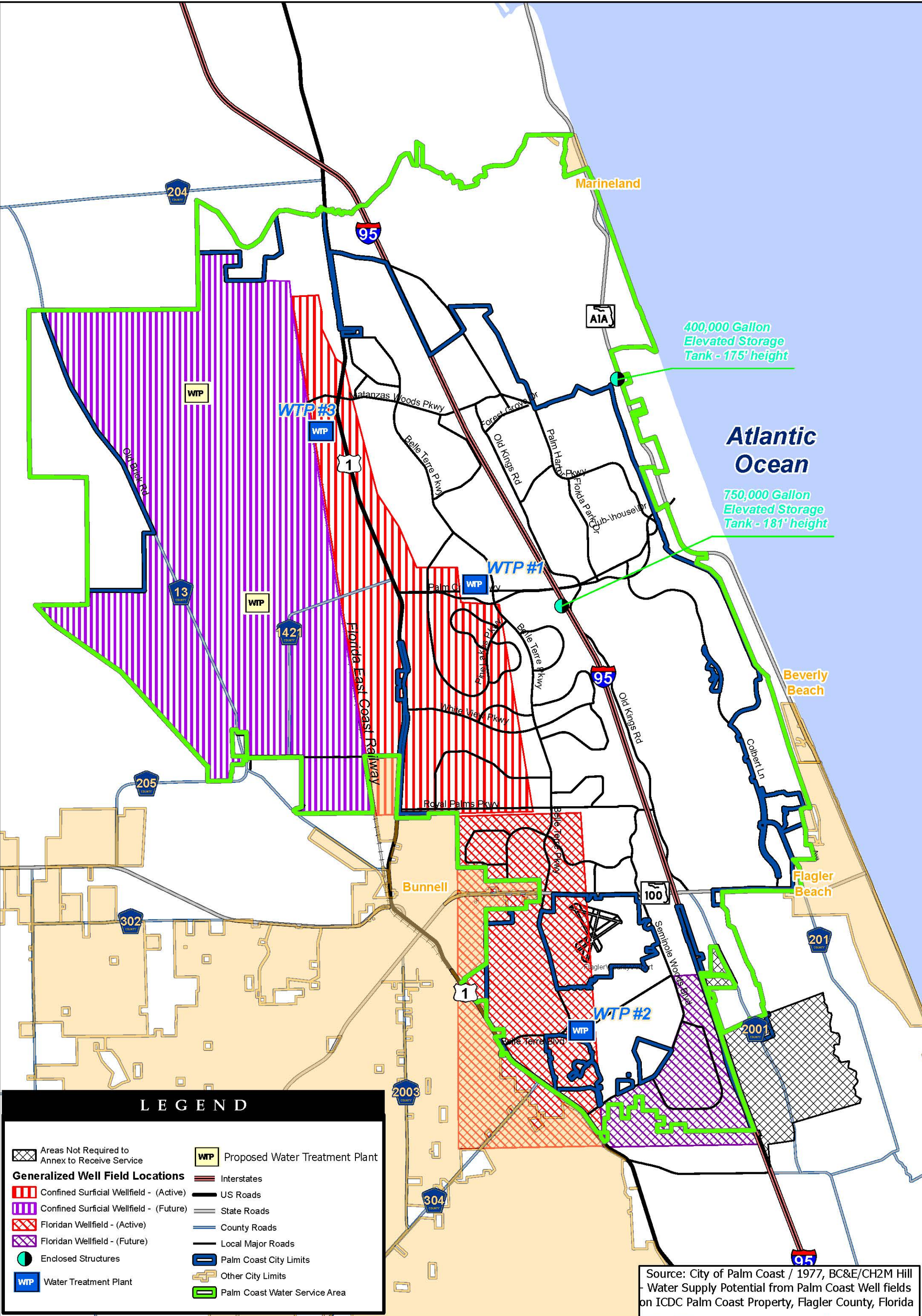
	PARK NAME
1	Belle Terre Park/Frieda Zamba Pool
2	Big Mulberry Creek
3	Bird of Paradise Nature Preserve
4	Cobblestone Canoe Launch
5	Cypress Knoll/East Hampton
6	Heroes Memorial Park
7	Hidden Lakes Park
8	Holland Park-James F. Holland Memorial Park
9	Indian Trails Park
10	Indian Trails Sports Complex
11	Linear Park/St. Joe Walkway
12	Long Creek Nature Preserve
13	Matanzas Lakes Canoe Launch
14	Matanzas Woods
15	Palm Coast Community Center Park
16	Palm Coast Park DRI - Sports Complex
17	Palm Harbor Golf Course
18	Pine Lakes Parkway Multi-Purpose Trail
19	Quail Hollow Neighborhood
20	Ralph Carter Park
21	Seminole Woods Neighborhood Park
22	Southern Recreation Center
23	Town Center Central Park
24	Town Center-Community Center
25	Town Center-Cultural Arts Center
26	Town Center-Pocket Park
27	Waterfront Park & Childrens Memorial Garden
28	Whiteview Village Park
29	Wild Oaks Park
30	Lehigh Greenway Rail Trail
31	Graham Swamp Conservation Area
32	Belle Terre Swim & Racquet Club
33	Pine Lakes Golf Course

LEGEND

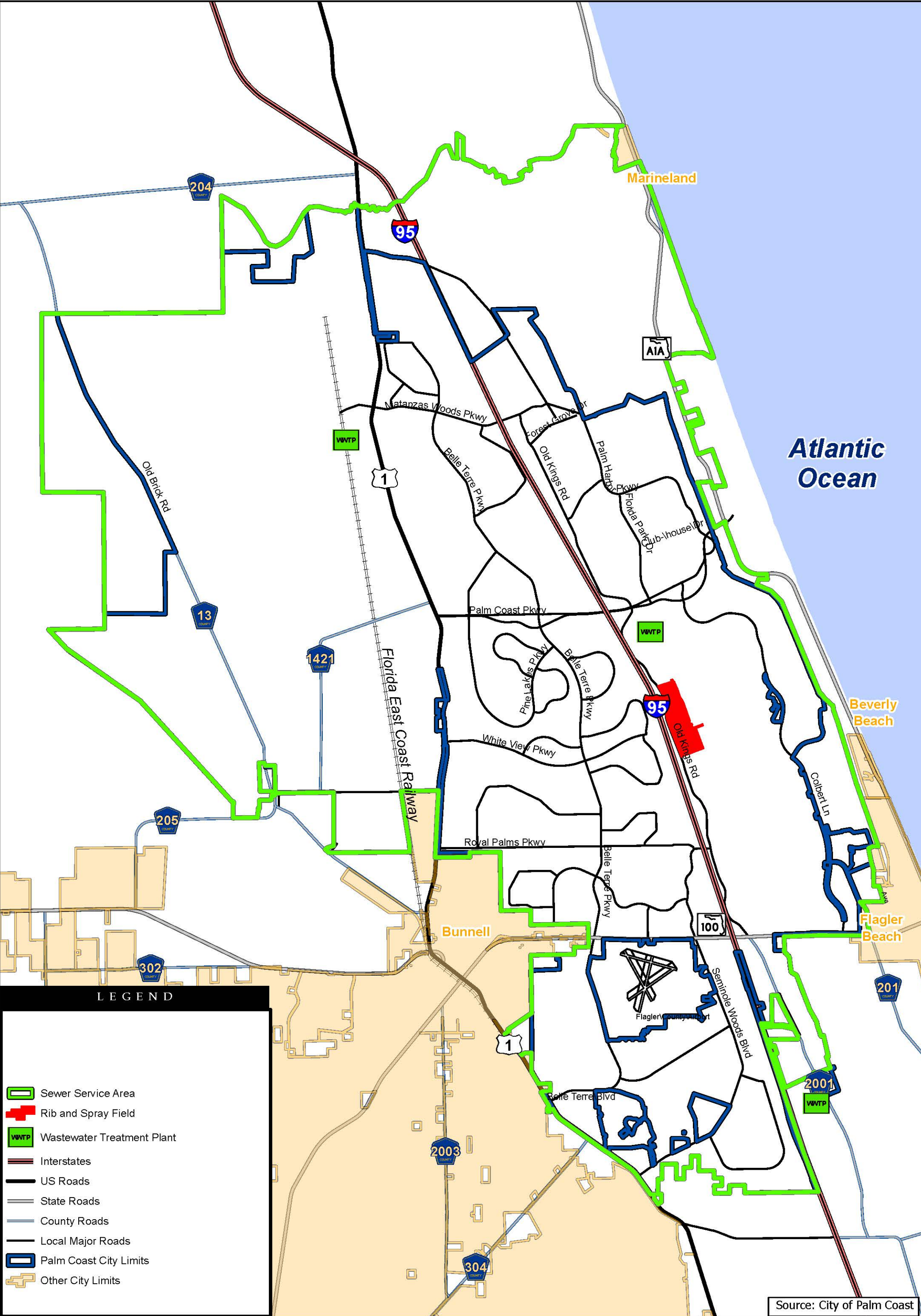
- Bicycle and Pedestrian Trails
- City Park Land**
 - Developed
 - Undeveloped
- Other Providers**
 - Developed
 - Natural Public Lands
- Palm Coast City Limits
- Other City Limits

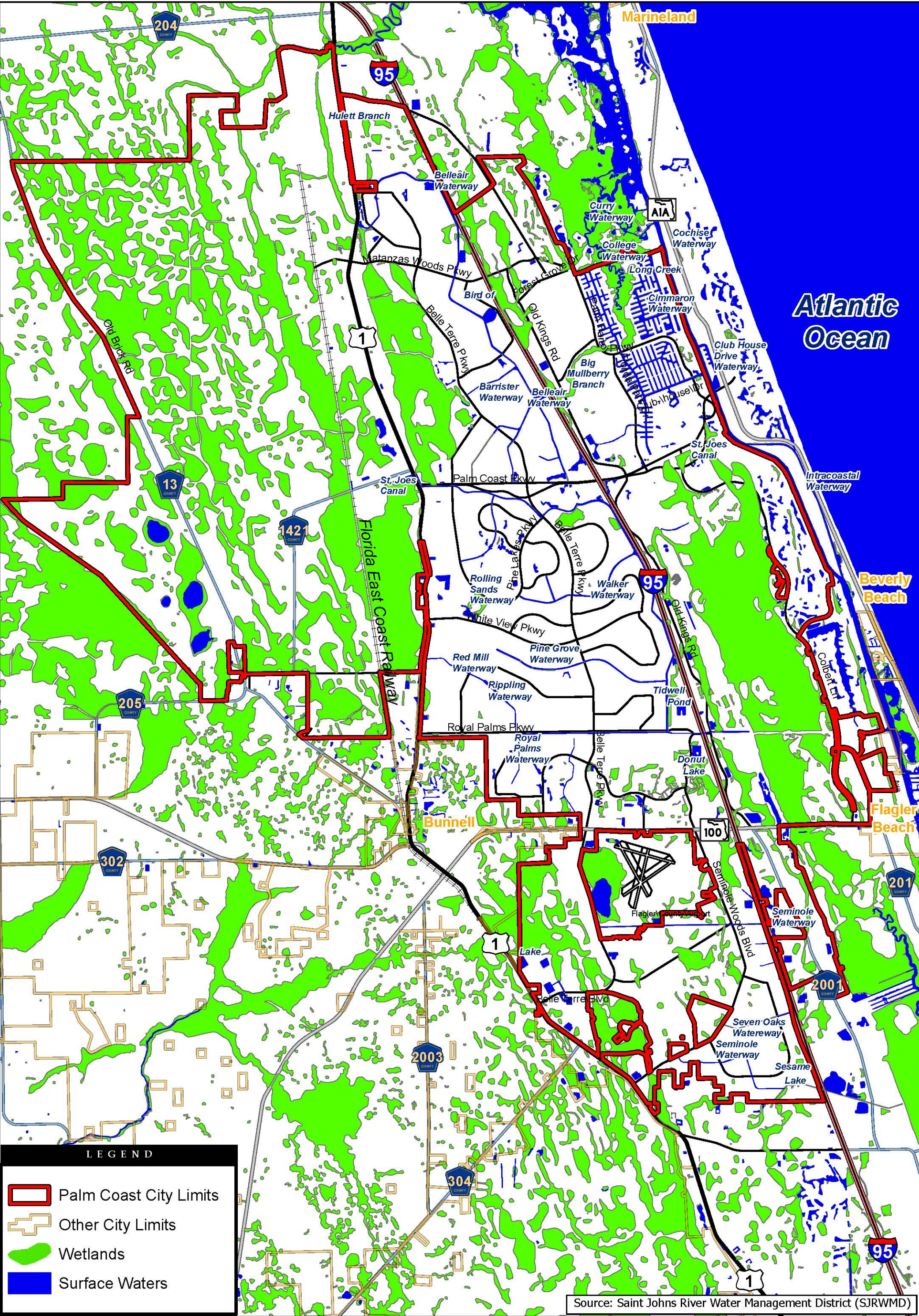






Source: City of Palm Coast / 1977, BC&E/CH2M Hill
Water Supply Potential from Palm Coast Well fields
on ICDC Palm Coast Property, Flagler County, Florida





Source: Saint Johns River Water Management District (SJRWMD)

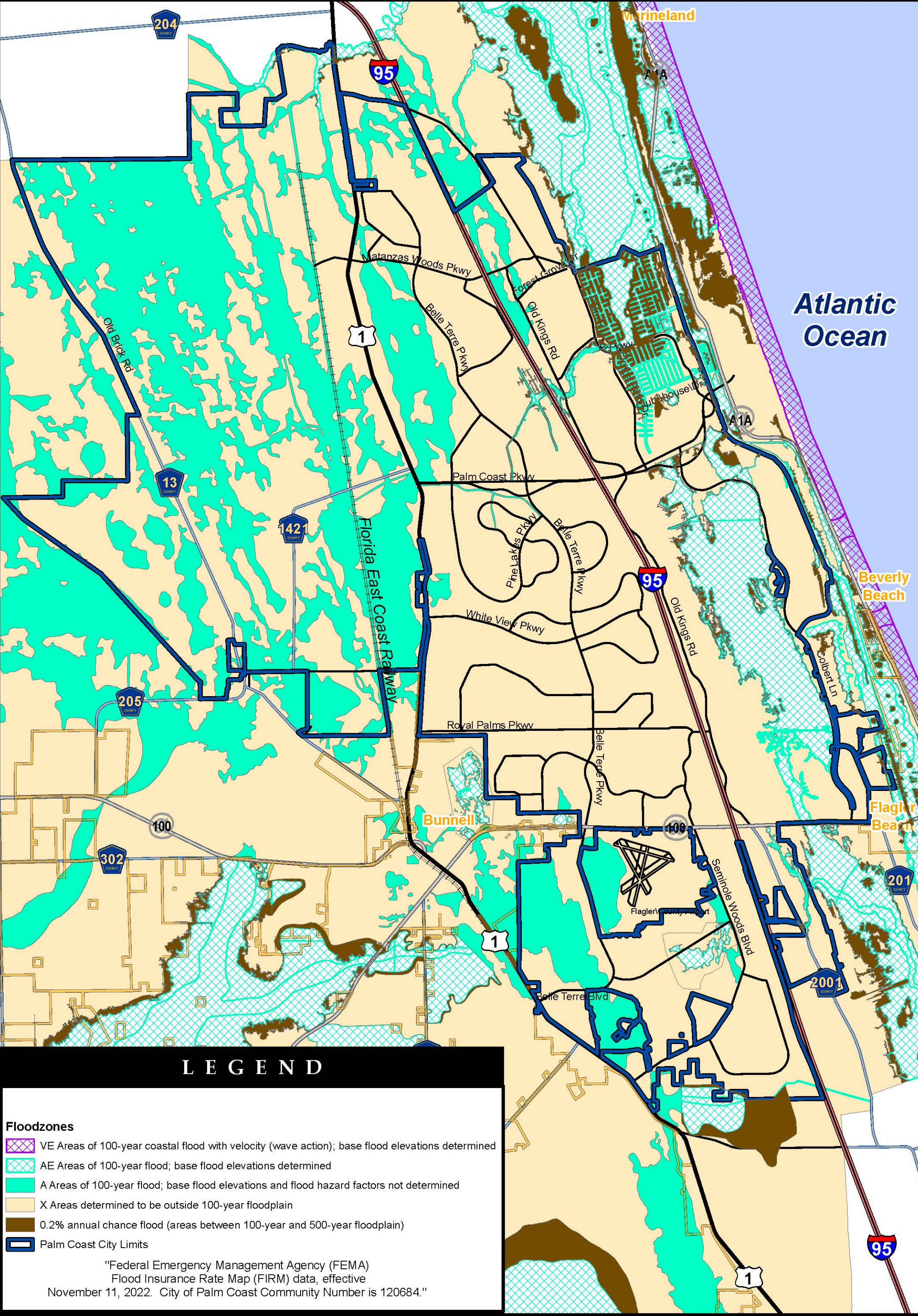


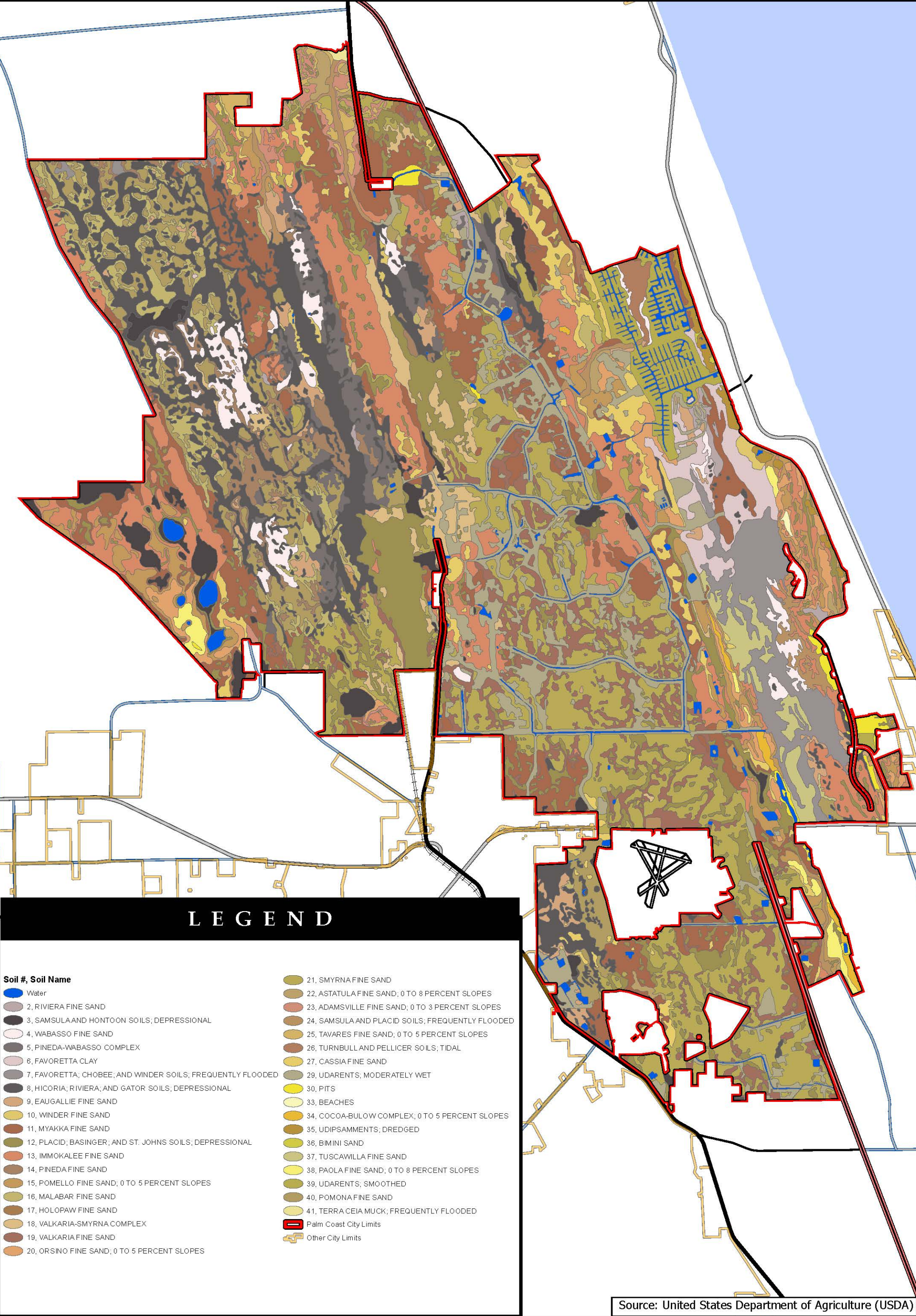
City of Palm Coast Comprehensive Plan

Wetlands and Surface Waters (CP-6.1)

Draft Date : April 17, 2024

Print Date: July 10, 2024





Source: United States Department of Agriculture (USDA)



City of Palm Coast Comprehensive Plan

Soils Map (CP-6.3)

Draft Date : April 17, 2024

Print Date: July 10, 2024

